

SANDY RIDGE

Compliance Assessment

Report No. 5

Ministerial Statement 1078

Prepared for

Western Australia Government
Department of Water and
Environmental Regulation

Prepared by:

Tellus Holdings Ltd

Suite 2, Level 10, 151 Castlereagh Street, Sydney, NSW 200, Australia

T +61 2 8957 3395 www.tellusholdings.com

ABN 97 138 119 829

Tellus is certified to AS/NZS ISO 9001, AS/NZS ISO 4001 and AS/NZS45001.

Tellus Holdings Ltd

September 2023

This page has been left blank intentionally.

QUALITY INFORMATION

| | |
|----------------------|--|
| Document: | Sandy Ridge Compliance Assessment Report No.5 – 2022/2023 |
| Status: | Final |
| Prepared for: | Western Australia Government Department of Water, Environment and Regulation |
| Ref: | SR00-229429885-179715 |
| Date: | 22/09/2023 |
| Prepared by: | Nick Croston – KASA Consulting |
| Reviewed by: | Nathan Jardine – Tellus Environment Manager |
| Approved by: | Pascoe Murison– Tellus General Manager Operations |

REVISION HISTORY

| Page No. | Details | Version | Date |
|----------|-----------------|---------|----------|
| - | First Published | 0 | 22/09/23 |
| | | | |
| | | | |
| | | | |

This page has been left blank intentionally.

TABLE OF CONTENTS

| | |
|--|------------|
| ABBREVIATIONS | VII |
| EXECUTIVE SUMMARY | 1 |
| 1 INTRODUCTION | 1-1 |
| 1.1 Background..... | 1-1 |
| 1.2 Purpose and scope | 1-2 |
| 1.3 Report methodology..... | 1-3 |
| 1.4 Retention of compliance assessments | 1-3 |
| 1.5 Public availability of reports | 1-3 |
| 1.6 Proposed changes to the compliance assessment plan | 1-3 |
| 1.7 Format of the report..... | 1-3 |
| 2 IMPLEMENTATION STATUS | 2-1 |
| 2.1 Approvals..... | 2-1 |
| 2.2 Construction | 2-1 |
| 2.3 Operations..... | 2-1 |
| 2.4 Decommissioning | 2-3 |
| 3 DETAILS OF DECLARED COMPLIANCE STATUS | 3-4 |
| 3.1 Management plans..... | 3-6 |
| 3.2 Management plan implementation | 3-6 |
| 3.3 External audits | 3-9 |
| 4 LIMITATIONS OF THIS REPORT | 4-1 |
| 5 REFERENCES | 5-1 |
| 5.1 Supporting, verifying information, documentation | 5-1 |
| 5.2 External references..... | 5-2 |

List of Appendices

| | |
|--|----------|
| Appendix A – Statement of Compliance | A |
| Appendix B – MS 1078 Audit Table | B |
| Appendix C – Compliance Status of Key Characteristics | C |

List of Tables

Table ES-1 – Overall compliance status with MS 1078.....1
Table 1-1 – Key characteristics of proposal, Ministerial Statement No. 1078 1-2
Table 1-2 – Extent of physical and operational limits 1-2
Table 2-1 – Approvals summary 2-1
Table 2-2 – Controlled waste accepted during reporting period 2-2
Table 2-3 – Radiation waste accepted during reporting period..... 2-3
Table 2-4 – Permanently disposed waste during reporting period..... 2-3
Table 3-1 – Compliance status terms 3-4
Table 3-2 – Overall compliance assessment of MS 1078 3-5
Table 3-3 – Summary of non-compliances with conditions of MS 1078 3-5
Table 3-4 – Potential non-compliances with conditions of MS 1078 3-5
Table 3-4 – Approved management plans 3-6
Table 3-5 – Submitted management plans 3-6
Table 3-6 – Implementation review of management plans 3-6
Table C-1 – Compliance status of key characteristics, Table 2, Schedule 1 MS 1078 C

List of Figures

Figure 1-1 Sandy Ridge Facility Regional Location. 1-4
Figure 1-2 Sandy Ridge Facility Monitoring Stations. 1-5

ABBREVIATIONS

| | |
|------------------|---|
| AACR | Annual Audit Compliance Report |
| AQMP | Air Quality Management Plan |
| CAP | Compliance Assessment Plan |
| CAR | Compliance Assessment Report |
| CEO | Chief Executive Officer of Department of Water and Environmental Regulation, responsible for the administration of section 48 of the <i>Environmental Protection Act 1986</i> or their delegate |
| CFMP | Construction Fauna Management Plan |
| DGMMP | Deep Groundwater Monitoring and Management Plan |
| DWER | Department of Water and Environmental Regulation |
| EP Act | <i>Environmental Protection Act 1986</i> |
| ERD | <i>Environmental Review Document</i> |
| FMP | Fauna Management Plan |
| FVMP | Flora and Vegetation Management Plan |
| GIS | Geographic Information System |
| GME | Groundwater Monitoring Event |
| ha | Hectares |
| ISO 14001 | Internationally agreed standard that sets out the requirements for an Environmental Management System. |
| km | Kilometers |
| LLW | Low level radioactive waste |
| LMMP | Leachate Monitoring and Management Plan |
| MS 1078 | Ministerial Statement 1078 |
| MS 1152 | Ministerial Statement 1152 |
| OEPA | Office of the Environmental Protection Authority |
| OFI | Opportunity for Improvement |
| PAG 1 | OEPA document – Post Assessment Guideline No. 1 – Post Assessment Guideline for Preparing an Audit Table |
| PAG 3 | OEPA document – Post Assessment Guideline No. 3 – Post Assessment Guideline for Preparing a Compliance Assessment Report |
| PAG 4 | OEPA document – Post Assessment Guideline for Making Information Publicly Available |
| PFAS | Per- and poly- fluoroalkyl substance |
| PER | Public Environmental Review |
| SRF | Sandy Ridge Facility |
| Tellus | Tellus Holdings Ltd |
| t | Tonnes |
| tpa | Tonnes per annum |
| WFDCP | Waste Facility Decommissioning and Closure Plan |

EXECUTIVE SUMMARY

Tellus Holdings Ltd (Tellus or the Company) as the Proponent for the Sandy Ridge Facility was issued with Ministerial Statement No. 1078 (MS 1078) on 27 June 2018. MS 1078 allows Tellus to construct and operate a dual open cut kaolin clay mine and a near-surface geological waste repository accepting Class IV and Class V waste, approximately 75 kilometres northeast of Koolyanobbing in the Shire of Coolgardie, Western Australia.

This report has been prepared in accordance with Condition 4-6 of MS 1078 that requires Tellus to prepare and submit to the Department of Water and Environmental Regulation (DWER) a Compliance Assessment Report (CAR), 15 months from date of approval of MS 1078 and then annually from the date of submission of the first CAR, or as otherwise agreed in writing by the CEO.

This is the fifth CAR to be submitted against the requirements of MS 1078 and has been prepared in accordance with the requirements of the *Post Assessment Guideline for Preparing an Audit Table, Post Assessment Guideline No. 1* (OEPA, 2012a) and the *Post Assessment Guideline for Preparing a Compliance Assessment Report, Post Assessment Guideline No. 3*. (OEPA, 2012c). The reporting period has been defined as from 27 June 2022 to 26 June 2023.

Tellus’s overall compliance status with MS 1078 for the reporting period is summarised in **Table ES-1**.

Table ES-1 – Overall compliance status with MS 1078

| Compliant Conditions | Completed Conditions | Not Required Conditions | Potentially Non-compliant Conditions | Non-compliant Conditions | In Process Conditions |
|----------------------|----------------------|-------------------------|--------------------------------------|--------------------------|-----------------------|
| 64 | 32 | 16 | 1 | 2 | 5 |

Two non-compliant conditions were identified against the requirements of MS 1078 during the reporting period, Conditions 1-1 and 8-1 (2). Tellus consider that neither of these non-compliances have caused material or serious harm to the environment. The non-compliant conditions were as follows:

- Condition 1-1 – The extent of the proposal, as defined in Table 2 of Schedule 1 has been exceeded regarding the 12 month maximum temporary storage time for waste prior to permanent disposal.
- Condition 8-1 (2) - The facility had not been managed in accordance with all regulatory requirements during the reporting period. An audit of the site Environmental Licence L9240-2020 identified 2 non-compliances, which were reported through the 2022/23 Annual Audit Compliance Report (AACR).

One finding has been classified as potentially non-compliant:

- Condition 7-3.4 - The specific coordinates for the locations of each waste package stored in the waste cells and temporary storage area were not available.

Although non-compliant against Condition 7-3.4 of MS1078, this has been classified as potentially non-compliant because Tellus has submitted an Environmental Review Document (ERD) as part of the Proposal to increase the Sandy Ridge gatehouse annual tonnage from 100kt to 280kt. The ERD requests that this condition (and the associated Condition 8-2(6) is excluded from the new Ministerial Statement.

The Statement of Compliance is included in **Appendix A**.

A summary of the status of all conditions is outlined in the Compliance Assessment Audit Table (**Appendix B**).

1 INTRODUCTION

This Compliance Assessment Report (CAR) has been prepared to document compliance with Ministerial Statement No. 1078 (MS 1078) issued under the *Environmental Protection Act 1986* to Tellus Holdings Ltd (Tellus or the Company) to construct and operate a dual open cut kaolin clay mine and a near-surface geological waste repository known as the Sandy Ridge Facility (the Facility).

The Facility is licenced to accept Class IV and Class V waste and is located approximately 75 kilometres (km) northeast of Koolyanobbing, Western Australia (WA).

1.1 Background

In 2015 Tellus submitted a referral to the WA government to construct and operate an open-cut kaolin (clay) mine and complementary near-surface geological waste repository, accepting Class IV (Secure Landfill) and Class V (Intractable Landfill) waste, including waste from interstate and within Australia’s Exclusive Economic Zone.

The Facility was granted WA government Ministerial Approval on 26 June 2018 (Ministerial Statement 1078). Tellus has approval to mine kaolin under the *Mining Act, 1978* and to store, treat and dispose of hazardous and intractable chemical and low-level radioactive waste materials under the *Environmental Protection Act, 1986* (EP Act).

Up to 280,000 tonnes per annum (tpa) of kaolin clay will be mined and the mining voids will be used for the permanent isolation of wastes, including hazardous and intractable wastes, and low-level radioactive waste (LLW). The Facility is currently licenced to receive up to 280,000 tpa of Class IV and Class V waste for approximately 25 years; however, a Proposal has been submitted by Tellus (Assessment number 2309 – Sandy Ridge Facility – Alignment of Gate Waste Acceptance Tonnage) to increase the tonnage of waste accepted at the Sandy Ridge Facility from the current Ministerial limit of 100,000tpa to align with the DWER licence prescribed limit of up to 280,000 tpa.

The Facility consists of:

- Mine infrastructure, including stockpile area, storage building, laboratory, mining offices, laydown yard, stormwater storage tanks (4), brine pond and settlement pond.
- Waste infrastructure including an inflatable dome waste cell cover, temporary waste storage areas (East Yard, PFAS (Per- and poly- fluoroalkyl substance) contaminated waste storage area, low level radiation waste warehouse/ liquid waste unloading area, low level radiation waste, liquid waste and sludge storage yard), temporary waste storage area stormwater drains and retention pond, waste inspection area, waste immobilisation plant, workshop and laydown yard, flammable goods store, radiation scanner and waste laboratory.
- Other infrastructure including an accommodation camp, access roads, water pipelines, wastewater treatment plant, flood levee, and a putrescible landfill. The putrescible landfill services the accommodation camp and office. Only wastes generated at the Facility will be disposed in this landfill.

A Regional Location plan is presented as **Figure 1-1** at the end of this Section. Monitoring locations at the Facility are presented in **Figure 1-2**.

1.2 Purpose and scope

This CAR is submitted in accordance with the requirements set out in Condition 4-6 of MS 1078, which requires the following:

Condition 4-6 – Compliance Reporting

The proponent shall submit to the CEO the first Compliance Assessment Report fifteen (15) months from the date of issue of this Statement addressing the twelve (12) month period from the date of issue of this Statement and then annually from the date of submission of the first Compliance Assessment Report, or as otherwise agreed in writing by the CEO.

The Compliance Assessment Report shall:

- (1) be endorsed by the proponent’s CEO or a person delegated to sign on the CEO’s behalf;*
- (2) include a statement as to whether the proponent has complied with the conditions;*
- (3) identify all potential non-compliances and describe corrective and preventative actions taken;*
- (4) be made publicly available in accordance with the approved Compliance Assessment Plan; and*
- (5) indicate any proposed changes to the Compliance Assessment Plan required by condition 4-1.*

The reporting period for this CAR is from 27 June 2022 to 30 June 2023, based on approval received from DWER (ref. DWERA-001158) to align reporting dates for the annual waste audit and CAR with the Annual Environment Report. This CAR is based on Tellus’ assessment of compliance with the conditions of MS 1078 and in accordance with the approved Compliance Assessment Plan (CAP), as required by Condition 4-2. The Facility’s current CAP (V0) was approved by the Department of Water and Environmental Regulation (DWER) on 17 December 2018.

Table 1-1 describes the characteristics of the Project of MS 1078.

Table 1-1 – Key characteristics of proposal, Ministerial Statement No. 1078

| Element | Description of Proposal |
|----------------------|--|
| Sandy Ridge Facility | The proposal is to construct and operate a dual open cut kaolin clay mine and a near-surface geological waste repository accepting Class IV and Class V waste, approximately 75 kilometres northeast of Koolyanobbing. |

Table 1-2 summarises the physical extent and operational limits of the Facility.

Table 1-2 – Extent of physical and operational limits

| Element | Extent |
|---|--|
| Physical Elements | |
| Mine pits/waste cells | Clearing up to 202.3 hectares (ha) of native vegetation within a 1,061 ha development envelope |
| Associated infrastructure | Clearing up to 73.75 ha of native vegetation within a 1,061 ha development envelope |
| Operational Elements | |
| Class IV & V wastes accepted at gate | up to 100,000 tpa |
| Temporary waste storage on surface | up to 15,000 tonnes (t) |
| Maximum temporary storage time | up to 12 months |
| Waste (including treated waste) disposed to waste cells | up to 280,000 tpa |
| Water use | up to 0.18 Gigalitres per annum |

1.3 Report methodology

This CAR has been prepared in accordance with the requirements of the Office of the Environmental Protection Authority (OEPA) *Post Assessment Guideline No.2 – Preparing a Compliance Assessment Report* (PAG 3) (OEPA, 2012c).

Appendix A of the approved Tellus CAP v0 (2018) includes a table of audit elements derived from MS1078 which form the basis of items reported against in this CAR.

1.4 Retention of compliance assessments

Tellus will retain CARs (including all associated compliance assessments) and evidence used to verify compliance for the life of the proposal and then for a minimum of seven years after the end of the life of the proposal. Tellus will continue to implement the proposal until the CEO has determined all conditions of MS 1078 (including rehabilitation and decommissioning) have been satisfactorily addressed.

1.5 Public availability of reports

Tellus will make this CAR publicly available in accordance with the OEPA's Post Assessment Guideline No. 4 – Post Assessment Guideline for Making Information Publicly Available (PAG 4) (OEPA, 2012d). This CAR will be available on the Sandy Ridge Regulatory Information page of the Tellus website (www.tellusholdings.com) as per previous CARs.

1.6 Proposed changes to the compliance assessment plan

No changes were made to the CAP, required by Condition 4-1 of MS 1078, during the reporting period.

This section of subsequent CARs may include proposed changes to the CAP that were identified during the relevant reporting period. Proposed changes to the CAP for future reporting periods will be submitted to the CEO for approval as part of maintaining the CAP to the satisfaction of the CEO.

1.7 Format of the report

The format of this CAR is as follows:

- Chief Operating Officer's endorsement, including Tellus' statement of compliance.
- Executive Summary.
- Section 1 is an introduction and provides the scope and nature of the audit.
- Section 2 briefly describes the implementation status of the Facility during the reporting period.
- Section 3 summarises the compliance issues identified and provides corrective and preventative measures to improve the environmental performance at the Facility.
- Section 4 provides the limitations of the report.
- Section 5 provides references used in this CAR.

Appendix A is the Statement of Compliance against the requirements of MS 1078.

Appendix B is the Audit Table, a tabulated review of the audit results against the requirements of MS 1078.

Appendix C is the Compliance Status of Key Characteristics identified in Table 2, Schedule 1 of MS 1078.

This CAR provides a summary of findings including details of non-compliances identified during the audit and recommended actions to improve compliance status.

Figure 1-1 Sandy Ridge Facility Regional Location.

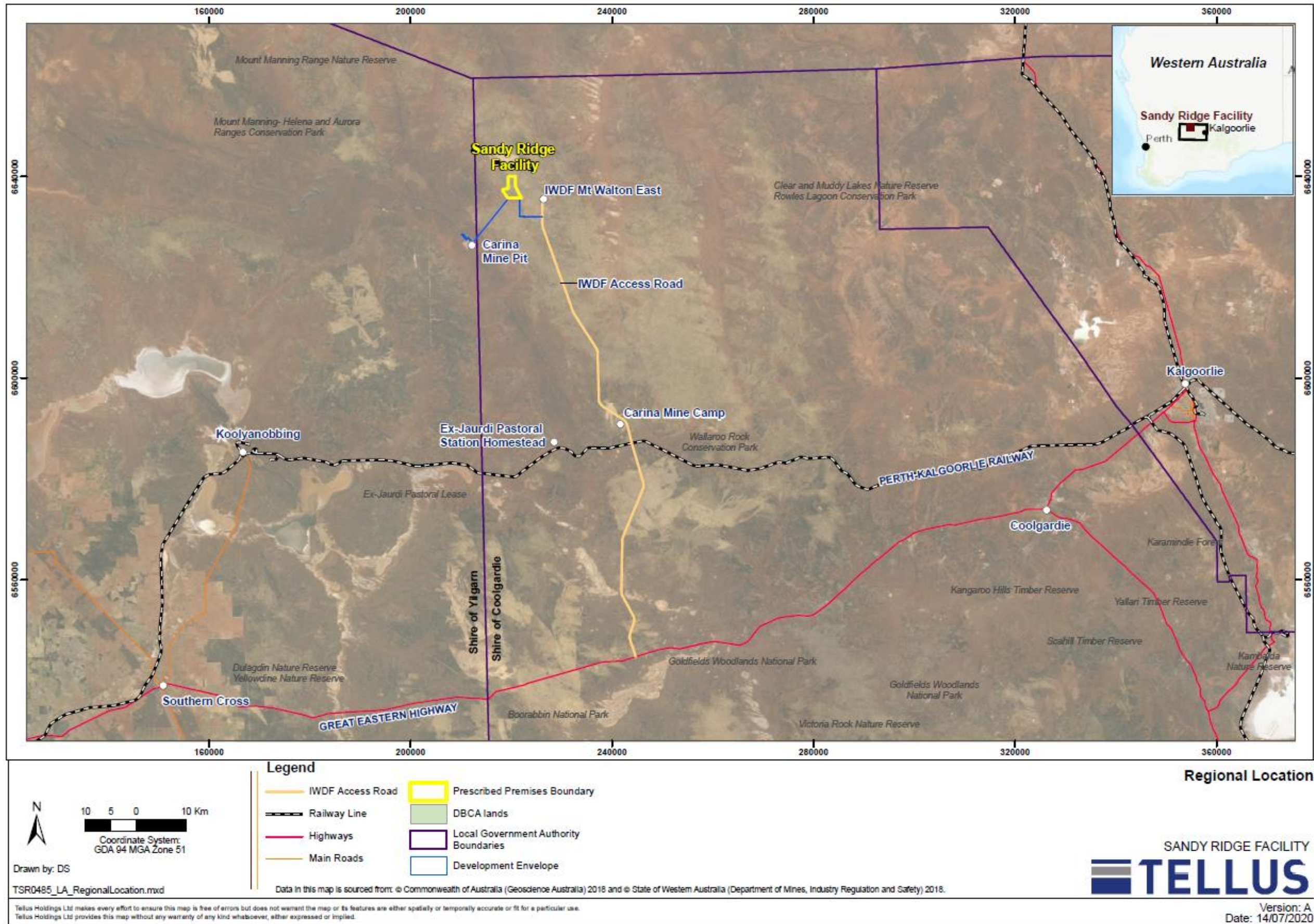
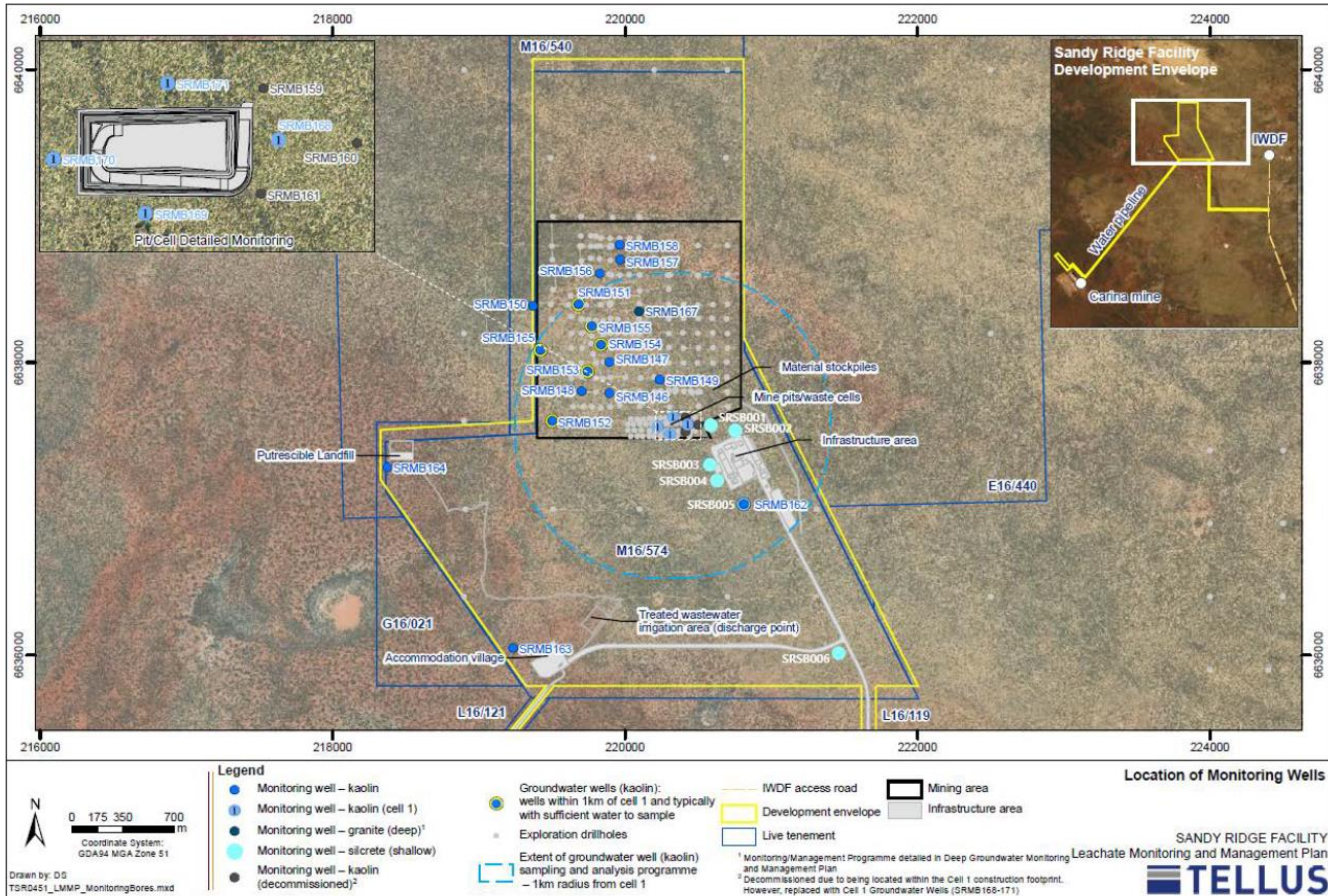


Figure 1-2 Sandy Ridge Facility Monitoring Stations.



2 IMPLEMENTATION STATUS

2.1 Approvals

Table 2-1 summarises the project approvals secured under the EP Act.

Table 2-1 – Approvals summary

| Approvals | Issued | Finish |
|--|------------|------------|
| Ministerial Statement 1078 - Proposal to construct and operate a dual open cut kaolin clay mine and a near-surface geological waste repository accepting Class IV and Class V waste, approximately 75 kilometres northeast of Koolyanobbing. | 27/07/2018 | |
| Section 45C – Attachment 1 to MS 1078 – Changes: <ul style="list-style-type: none"> Amend the development envelope from 1004.2 hectares to 1061 hectares to allow for relocation of groundwater abstraction infrastructure. Installation of a 1.5 megawatt solar farm for power generation. Addition of two stormwater sumps on internal roads in the infrastructure area. Reduction in the width of internal roads to the Class II landfill and along the groundwater pipeline to Carina Iron Ore Mine. Addition of an access road adjacent to Mt Dimer Road. Addition of a flood levee. Change in orientation and size of accommodation camp. | 05/02/2019 | |
| Ministerial Statement 1152 (Condition 13-11 Financial Assurance Requirements). | 24/09/2020 | |
| Major approvals, permits and licences from the Australian, WA and Local Government required to temporarily store waste on-site. | - | 29/06/2020 |
| Site Registration – Controlled Waste Facility No. 39106650. | - | 21/01/2020 |
| W6305/2019/1 – Works Approval to authorise the construction of the temporary waste storage area. | 20/12/2019 | 19/12/2022 |
| W6308/2019/1 – Works Approval to authorise the construction of the main processing and treatment infrastructure of the Facility. | 07/02/2020 | 06/02/2023 |
| Licence L9240/2020/1 – Surface storage licence (Cat. 61 liquid waste and 61A solid waste activities). | 29/06/2020 | 28/06/2040 |
| W6700/2022/1 – Works Approval to construct three additional waste cells, to be known as Cell 2, Cell 3 and Cell 4. | 13/12/2022 | 13/12/2027 |
| Licence L9240/2020/1 amendment – Surface storage licence (Cat. 61 liquid waste and 61A solid waste activities) – L9240/2020/1. | 01/06/2023 | 28/06/2040 |

Registration R2498/2019/1 was granted in November 2019 for the operation of the wastewater treatment plant, and registration R2501/2020/1 was granted in February 2020 for the premises domestic putrescible landfill.

2.2 Construction

No construction activities were undertaken during the reporting period.

2.3 Operations

During the reporting period the facility was fully operational and received a total of 16,595.43 tonnes of waste. A breakdown by controlled waste type and radioactive waste received during the reporting period (27 June 2022 and 30 June 2023) is detailed in Table 2-2 and Table 2-3 below.

Table 2-2 – Controlled waste accepted during reporting period

| Waste Type | Normalised tonnes |
|---|-------------------|
| A130 – Inorganic cyanide | 36.05 |
| B100 – Acidic solutions or acids in solid form | 745.69 |
| C100 - Basic (alkaline) solutions or bases (alkalis) in solid form | 364.97 |
| D110 - Inorganic fluorine compounds (excluding calcium fluoride) | 1.27 |
| D120 – Mercury and mercury compounds | 26.73 |
| D130 – Arsenic and arsenic compounds | 577.98 |
| D160 – Beryllium and beryllium compounds | 0.36 |
| D180 - Thallium and thallium compounds | 0.6 |
| D210 – Nickel compounds | 3,266.36 |
| D220 – Lead and lead compounds | 1,823.45 |
| D270 - Vanadium compounds | 30.2 |
| D300 - Non toxic salts | 2,843.68 |
| D310 - Boron compounds | 1.07 |
| E100 - Waste containing peroxides excluding hydrogen peroxide | 14.18 |
| E130 - Highly reactive chemicals not otherwise specified | 74.43 |
| F130 - Solvent based wastes from the production, formulation and use of resins, latex, plasticisers, glues and adhesives | 19.98 |
| G110 - Non-halogenated organic solvents | 5.94 |
| H100 – Waste from the production, formulation or use of biocides and phytopharmaceuticals | 65.13 |
| H170 – Waste wood-preserving chemicals | 2,656.1 |
| J100 – Waste mineral oils unfit for their intended purpose | 1,088.3 |
| J120 - Waste oil and water mixtures or emulsions, and hydrocarbon and water mixtures or emulsions | 11.75 |
| J160 – Waste tarry residues arising from refining, distillation or pyrolytic treatment | 301.58 |
| M100 – Waste substances and articles containing polychlorinated biphenyls (PCBs) | 0.18 |
| M130 – Non-halogenated organic chemicals | 2.6 |
| M220 – Isocyanate compounds | 8.69 |
| M250 – Surfactants and detergents | 26.97 |
| M270 – Per- and poly- fluoroalkyl substance (PFAS) contaminated materials, including waste PFAS containing products and contaminated containers | 1,774.76 |
| N120 – Soils contaminated with a controlled waste | 742.88 |
| N205 – Industrial waste treatment plant residues | 11.67 |
| N220 - Asbestos | 23.84 |
| R120 - Waste pharmaceuticals, drugs and medicines | 22.95 |
| T100 – Waste chemical substances arising from research and development or teaching | 0.1 |
| Total tonnes received during reporting period | 16,570.43 |

Table 2-3 – Radiation waste accepted during reporting period

| Waste Type | Normalised tonnes |
|--|-------------------------------|
| Unsealed radioactive material | 25.0 |
| Disused sealed radioactive sources | 292 units (weight negligible) |
| Total tonnes received during reporting period | 25.0 |

Permanent disposal to Waste Cell 1 commenced on 23rd March 2021. Permanently disposed waste during the reporting period is summarised in Table 2-4.

During the reporting period a total of 18,654.71 tonnes of waste was permanently disposed of to Waste Cell 1, as summarised by waste code in Table 2-4. This included 3,667.50 t of liquid PFAS waste (inclusive of cement and kaolin matrix) processed through the Waste Immobilisation Plant (WIP).

No radioactive waste was permanently disposed of during the reporting period.

Table 2-4 – Permanently disposed waste during reporting period

| Waste Type | Normalised tonnes |
|---|-------------------|
| A130 – Inorganic cyanide | 39.77 |
| B100 – Acidic solutions or acids in solid form | 76.53 |
| C100 - Basic (alkaline) solutions or bases (alkalis) in solid form | 75.70 |
| D110 - Inorganic fluorine compounds (excluding calcium fluoride) | 1.27 |
| D120 – Mercury and mercury compounds | 79.39 |
| D130 – Arsenic and arsenic compounds | 403.39 |
| D210 – Nickel compounds | 1,376.38 |
| D220 – Lead and lead compounds | 2745.11 |
| D270 - Vanadium compounds | 30.20 |
| D300 - Non-toxic salts | 2602.86 |
| E100 - Waste containing peroxides excluding hydrogen peroxide | 7.26 |
| E130 - Highly reactive chemicals not otherwise specified | 1.47 |
| H170 – Waste wood-preserving chemicals | 2661.85 |
| J100 – Waste mineral oils unfit for their intended purpose | 1,105.68 |
| J160 – Waste tarry residues arising from refining, distillation or pyrolytic treatment | 306.36 |
| M270 – Per- and poly- fluoroalkyl substance (PFAS) contaminated materials, including waste PFAS containing products and contaminated containers | 6,331.32 |
| N120 – Soils contaminated with a controlled waste | 786.94 |
| N205 – Industrial waste treatment plant residues | 7.01 |
| N220 - Asbestos | 16.22 |
| Total tonnes disposed of during reporting period | 18,654.71 |

2.4 Decommissioning

No decommissioning activities were conducted during the reporting period.

3 DETAILS OF DECLARED COMPLIANCE STATUS

Table 3-1 provides a summary of the performance categories in respect to the compliance status for each requirement of MS 1078 as defined in the OEPA *Post Assessment Guideline No. 1 – Post Assessment Guideline for Preparing an Audit Table* (PAG 1) (OEPA, 2012a, p.9).

Table 3-1 – Compliance status terms

| Compliance Status Term | Acronym | Definition |
|-----------------------------------|---------|---|
| Compliant | C | Implementation of the proposal has been carried out in accordance with the requirements of the audit element. |
| Completed | CLD | A requirement with a finite period of application has been satisfactorily completed. |
| Not Required at this Stage | NR | The requirements of the audit element were not triggered during the reporting period. |
| Potentially Non-compliant | PNC | Possible or likely failure to meet the requirements of the audit element. |
| Non-compliant | NC | Implementation of the proposal has not been carried out in accordance with the requirements of the audit element. |
| In Process | IP | Where an audit element requires a management or monitoring plan be submitted to the OEPA or another government agency for approval, that submission has been made and no further information or changes have been requested by the OEPA or the other government agency and assessment by the OEPA or other government agency for approval is still pending. |

The overall status of compliance with the Conditions of MS 1078 for the reporting period is summarised in Table 3-2. Requirements considered non-compliant are summarised in Table 3-3. The Statement of Compliance as required by PAG 1 is provided in **Appendix A**.

Tellus has provided comments and evidence next to each requirement. Where considered relevant, observations have been made regarding specific compliance issues.

The Compliance Status of Key Characteristics is presented in **Appendix C**.

Table 3-2 – Overall compliance assessment of MS 1078

| Number of Compliant Audit Elements | Number of Completed Audit Elements | Number of Not Required Audit Elements | Number of Potentially Non-compliant Audit Elements | Number of Non-compliant Audit Elements | Number of In Process Audit Elements |
|------------------------------------|------------------------------------|---------------------------------------|--|--|-------------------------------------|
| 64 | 32 | 16 | 1 | 2 | 5 |

Table 3-3 – Summary of non-compliances with conditions of MS 1078

| Audit Code | Subject | Requirement | Finding |
|--------------|--------------------------|--|--|
| 1078:M1.1 | Proposal Implementation | When implementing the proposal, the proponent shall not exceed the authorised extent of the proposal as defined in Table 2 of Schedule 1, unless amendments to the proposal and the authorised extent of the proposal have been approved under the EP Act. | As of 1 July 2023 the extent of the proposal, as defined in Table 2 of Schedule 1, has been exceeded regarding the maximum temporary storage time of 12 months. <ul style="list-style-type: none"> • 14 unsealed and 71 sealed radioactive sources received prior to 1 July 2022. • 611.9 tonnes of chemical waste • All radioactive material at Sandy Ridge is included in the Radioactive Material Storage Manifest, which is submitted to the Radiation Health Unit (Department of Health) monthly. All radioactive material continues to be stored in the Radioactive Waste Storage Yard, in accordance with Radiation Management Plan approved by the WA Radiological Council in March 2021. |
| 1078: P8.1.2 | Independent Annual Audit | The proponent shall manage the implementation of the proposal to meet the following objectives: (1) that the facility is managed in accordance with all regulatory requirements. | An audit of the site Environmental Licence L9240-2020 identified 2 non-compliances, against Conditions 7 and 15, which were reported through the 2022/23 Annual Audit Compliance Report (AACR). |

Table 3-4 – Potential non-compliances with conditions of MS 1078

| Audit Code | Subject | Requirement | Finding |
|--------------|-------------------------|---|--|
| 1078: P7.3.4 | Waste Management System | Provide details about the waste characteristics, quantity, storage duration and specific coordinates for the location of each waste package stored in the waste cells and temporary storage area. | Each lift within the waste cell is surveyed; however, the specific coordinates for the location of each waste package stored in the waste cells and temporary storage area are not recorded. |

3.1 Management plans

Table 3-5 summarises the current approved versions of management plans required by MS 1078. Table 3-6 includes the dates and revisions that have been submitted to the CEO and their approval status during the reporting period.

Table 3-5 – Approved management plans

| Condition No. | Management Plan | Date Prepared / Revised | Approval Date |
|---------------|--|-------------------------|------------------|
| 9-2 | Leachate Monitoring and Management Plan, VE ¹ | 7 May 2020 | 14 May 2020 |
| 10-5 | Flora and Vegetation Management Plan, V1 | 19 June 2019 | 1 July 2019 |
| 11-2 | Construction Fauna Management Plan, V1 | 13 June 2019 | 25 June 2019 |
| 12-1 | Waste Facility Decommissioning and Closure Plan, V3 | 6 February 2020 | 27 February 2020 |

Table 3-6 – Submitted management plans

| Condition No. | Management Plan | Date Prepared / Revised | Approval Date |
|---------------|--|-------------------------|-------------------|
| 9-2 | Leachate Monitoring and Management Plan, V1 | 22 November 2022 | Awaiting approval |
| 10-5 | Flora and Vegetation Management Plan, V4 | 13 October 2022 | Awaiting approval |
| 11-2 | Fauna Management Plan, V1 | 30 May 2022 | Awaiting approval |
| 12-1 | Waste Facility Decommissioning Closure Plan, Rev 4 | 18 August 2022 | Awaiting approval |

Condition 9-4(1), Condition 10-7(1), Condition 11-4(1) and Condition 12-3 of MS 1078 require Tellus to implement management plans, or any subsequent revisions as approved by the CEO. The current approved versions of management plans listed in Table 3-4 were reviewed as part of this compliance assessment. The approved Flora and Vegetation Management Plan included the following sub-plans/procedures:

- Appendix E: Vegetation Clearance Procedure, Draft, February 2019
- Appendix G: Bushfire Management Plan, V1, March 2019
- Bushfire Risk Management Plan, V0, March 2019
- Appendix H: Air Quality Management Plan, V0, March 2019
- Appendix I: Construction Erosion and Sedimentation Management Plan, V0, March 2019

3.2 Management plan implementation

Table 3-7 presents the findings of the review of implementation of approved management plans.

Table 3-7 – Implementation review of management plans

| Management Plan | Implementation Review |
|--|--|
| Leachate Monitoring and Management Plan, VE, 7 May 2020 | The Leachate Monitoring and Management Plan (LMMP) has been prepared to address Condition 9-2 of MS 1078. The environmental objective of this Condition is to “ensure that impacts to soil quality are minimised”. |

¹ E being the first approved version of this plan (i.e. Version 0).

| Management Plan | Implementation Review |
|---|--|
| | <p>Tellus submitted the LMMP to the CEO on 7 May 2020 who approved the plan in a letter to Tellus dated 14 May 2020. The LMMP was updated during the reporting period as detailed in Table 3-5.</p> <p>Site-specific baseline trigger and threshold criteria have been submitted to DWER and DCCEEW and were under assessment for formal approval at the time of writing.</p> <p>Implementation of the LMMP is described below:</p> <ul style="list-style-type: none"> • Twelve sampling events were undertaken to establish a baseline to establish trigger and threshold criteria. At the time of preparing this report the LMMP had been updated to reflect the results of the 12 GMEs and updated trigger and threshold levels and had been submitted to DWER for approval. • Biannual sampling against the parameters defined in Appendix H1 and H2 of the LMMP were undertaken in October 2022 (GME 4) and April 2023 (GME 5). The Reports for Groundwater Monitoring Events 4 and 5 (Summary Letter Reports) indicate that requirements outlined in the LMMP and the DGMMP had been implemented. • Standing water levels (SWL) were measured at all groundwater bores and all sites were within the assessment criteria trigger 0.5 m range. • Groundwater samples taken from five kaolin bores and one deep granite bore had 107 analytes measured: <ul style="list-style-type: none"> • Ninety-nine (99) of out of 107 analytes were below the interim assessment criteria for GME 4 and 66 out of 73 analytes were below the interim assessment criteria for GME 5. • Eight analytes were slightly above the interim assessment for GME 4 and seven analytes were slightly above the interim assessment criteria for GME 5. • The reports concluded that the analytes that measured above the interim assessment criteria in GME4 and GME5 suggest that: <ul style="list-style-type: none"> • Results are likely reflective of background conditions and highly unlikely caused by site operations. • Human influence during bore installation and/or sampling may have contributed to the increased variability metals concentrations. |
| <p>Flora and Vegetation Management Plan, V1 19 June 2019</p> | <p>The Flora and Vegetation Management Plan (FVMP) was prepared to address Condition 10-6 of MS 1078. Tellus submitted the FVMP to the CEO on 19 June 2019 who approved plan on 1 July 2019. Implementation of the FVMP and associated subordinate documents is described below. The FVMMP was updated during the reporting period as detailed in Table 3-5.</p> <p>The following are the controls defined in the FVMP to avoid direct impacts and manage indirect impacts on <i>Calytrix creswellii</i>, <i>Lepidosperma lyonsij</i>, and the “undescribed <i>Lepidosperma spp.</i>” where practicable.</p> <p>Avoid direct disturbance of conservation significant flora species.</p> <p>The FVMP allows for the removal of up to 276.05 Hectares (ha) native vegetation within a 1,061 ha development envelope broken down as follows:</p> <ul style="list-style-type: none"> • A maximum of 202.3 ha of native vegetation may be cleared for mine pits/waste cells. • A maximum of 73.75 ha of native vegetation may be cleared for associated infrastructure. • Since the project commenced a total of 97.03 ha has been cleared in the development area. Clearing is therefore within the limits stated in Ministerial Statement No 1078 (MS 1078). • No clearing was undertaken during the reporting period. <p>Tellus manages clearance of native vegetation through a Permit to Work system, which requires an assessment that the clearing has regard for the following clearing principles:</p> <ul style="list-style-type: none"> • Avoid the clearing of native vegetation. • Minimise the amount native vegetation to be cleared. • Reduce the impact of clearing on any environmental value. <p>Clearance permits are managed through the INX InControl module (INX SR-REG-003) and all cleared areas must be surveyed with disturbance data recorded in ArcGIS and reported annually through the Mining Rehabilitation Fund (MRF) report and Annual Environment Report (AER) to DMIRS.</p> <p>The Vegetation Clearing Procedure (SR-08.503) includes the requirement to hold a pre-clearing meeting (for workers conducting clearing) to ensure that the clearing plan is understood and clearing can only commence after a pre-clearing inspection is conducted. To ensure direct impacts on specified species are avoided and indirect impacts are managed the following controls are also defined in the procedure:</p> <ul style="list-style-type: none"> • Locations of conservation significant flora were recorded in GIS. |

| Management Plan | Implementation Review |
|---|--|
| | <ul style="list-style-type: none"> Approved clearing polygons and the as-cleared polygons are recorded in GIS. Clearing records are maintained in the Clearing Permit Register in INX InControl. <p>Any unauthorised clearing records are maintained in the INX InControl module (no unauthorised clearing occurred in the reporting period).</p> <p>Conservation Species Condition Monitoring</p> <p>Vegetation and conservation significant species condition monitoring is undertaken annually in Spring. Monitoring undertaken during the reporting period (August 2022) identified that the majority of vegetation adjacent to the operations at the SRF is in Excellent to Pristine condition with nil or minimal impacts from the adjacent development observable (Western Botanical, 2023).</p> <p>In addition to the Targeted Spring Flora Survey, twenty vegetation health monitoring quadrats were established in August 2022. These quadrats will be monitored annually in accordance with the Flora Vegetation Management Plan.</p> <p>Prevent the introduction and spread of weeds.</p> <p>The August 2022 annual Spring Flora and Vegetation Survey identified four weed species, all of which were located at either the Carina Borefield Area or its access road. These plants were all minor agricultural weeds and are not considered to pose a significant risk to the integrity of Sandy Ridge’s vegetation (Western Botanical, 2022). Quarterly vegetation monitoring of the Irrigation Spray Field is also undertaken.</p> <p>Weekly area inspections are progressively undertaken across site, including all disturbance areas and stockpiles and these include checking for weeds. During the reporting period minor weed species, including non-invasive <i>Brassica</i> species were detected at the accommodation camp and waste water treatment plant and these were removed. A patch of Common Sow Thistle was detected at the Irrigation Spray Field in February 2023 and was scheduled for treatment; however, a subsequent inspection identified that it had died off.</p> <p>Prevent the incidents of bushfires</p> <p>The Bushfire Management Plan was developed in accordance with State Planning Policy 3.7 Planning in Bushfire Prone Areas, as required by the Development Application to the Shire of Coolgardie. At the time of reporting the most recent version was V2, dated 29 March 2022. A Bushfire Risk Management Plan, V2, dated 29 March 2022 was appended to the Bushfire Management Plan. The requirements of the Bushfire MP had been largely met, including the annual firebreak inspection conducted in January 2023, which was recorded in the INX InControl platform (INX#10518) and the publication of the 2022-2023 Annual Bushfire Management Report.</p> <p>Protect air quality</p> <p>The Western Botanical Condition Assessment survey did not indicate that dust deposition was impacting the <i>Lepidosperma spp</i> colonies.</p> <p>The Air Quality Management Plan (AQMP) is not an MS 1078 required document but was appended to the approved FVMP, V1, 2019. The AQMP was developed to manage air quality-related impacts associated with the construction of the facility, which is complete.</p> <p>Reporting</p> <p>The FVMP includes the requirement to prepare a monthly environmental report in relation to compliance with environmental management controls on site. Comprehensive monthly reports had been prepared for the reporting period and corrective actions had been managed via INX InControl.</p> |
| <p>Construction Fauna Management Plan V1, 13 June 2019</p> | <p>It is noted that Tellus renamed the Construction Environmental Management Plan the Construction Fauna Management Plan (CFMP) in agreement with DWER to address Condition 11-2 of MS 1078. Tellus prepared the CFMP and submitted it to the CEO on 13 June 2019. The CEO approved the CFMP on 25 June 2019. During the reporting period the CFMP has been updated, as detailed in Table 3-5 and renamed the Fauna Management Plan (FMP). At the time of writing the FMP had been submitted to DWER and was awaiting approval.</p> <p>Condition 11-4(1) requires Tellus to implement the CFMP, or any subsequent revisions.</p> <p>Implementation of the CFMP is described below:</p> <ul style="list-style-type: none"> Pre-clearing inspections were conducted. Clearing records are maintained in the Clearing Permit Register in INX InControl. |

| Management Plan | Implementation Review |
|--|---|
| | <ul style="list-style-type: none"> The INX InControl module is used to log incidents and events of sightings/mortalities for trends in location of sighting or mortality or reason of mortality. Daily inspection records are maintained in the INX InControl platform. There were no recorded deaths of conservation significant fauna during the reporting period. |
| <p>Waste Facility Decommissioning and Closure Plan, V3, 6 February 2020</p> | <p>The Waste Facility Decommissioning and Closure Plan (WFDCP) has been prepared to address Condition 12-1 of MS 1078.</p> <p>Tellus submitted the WFDCP to the CEO on 6 February 2020 who approved the plan in a letter to Tellus dated 27 February 2020. During the reporting period the WFDCP has been updated. At the time of writing it is with EPA/s for assessment as part of EPA Assessment No. 2309 for the <i>Alignment of Gate Waste Acceptance Tonnage</i>.</p> <p>Condition 12-3 requires Tellus to implement the WFDCP, or any subsequent revisions.</p> <p>The WFDCP objectives will be implemented over three phases:</p> <ul style="list-style-type: none"> Phase I – Will consist of receiving, handling, and emplacing Class IV and Class V intractable waste in the near-surface geological repository (i.e. cells) for permanent isolation and will occur over the next 25 year period. Phase II – The Facility will be prepared for permanent closure. Phase III – The implementation of active and passive institutional controls. <p>The first scheduled activity under the WFDCP will occur in Phase I and is the progressive closure of waste cells including tasks such as cell cap design verification, plant species investigation followed by backfilling and capping of each cell. Given the first cell was still in use, implementation of the WFDCP is expected to commence in 2024.</p> |

3.3 External audits

No external audits from DWER were conducted during the reporting period.

Tellus sought to expand the scope of their ISO 14001 certification to include the Sandy Ridge facility during the reporting period. An external audit was conducted by Equal Assurance in June 2023 and Sandy Ridge has been recommended for certification.

4 LIMITATIONS OF THIS REPORT

This Report has been prepared by Tellus Holdings Ltd (Tellus) based on generally accepted practices and standards and information (including site conditions) available/present when it was prepared (in September 2021).

No other warranty, expressed or implied, is made as to the professional advice included in this Report. This Report was prepared in accordance with the purpose outlined in Ministerial Statement 1078, dated 27 June 2018.

Where this Report indicates that information has been provided to Tellus by third parties, Tellus has made no independent verification of this information except as expressly stated in the report. Tellus assumes no liability for any inaccuracies in or omissions to that information. This Report should be read in full.

5 REFERENCES

5.1 Supporting, verifying information, documentation

| | |
|---|-------------|
| [01] Tellus, 2020, 2019/2020 Compliance Assessment Report (Ref.GRACE-552978189) | Report |
| [02] Tellus, 2018, Sandy Ridge Compliance Assessment Plan, 29/11/2018, Ref: HS00-1760150200/TSR-5-HO-0220-AP-PLN-0001, V0. | Plan |
| [03] Transmittal No.: THL001-000413, Subject: MS 1078 Sandy Ridge Facility - Compliance Assessment Plan, 29/11/2018. | Plan |
| [04] Letter, DWER, 2018, Statement 1078 Sandy Ridge Facility CAO, 17/12/2018, Ref: DWERA-001158. | Letter |
| [05] Tellus, 2023, Compliance Assessment Report 2022/2023, September 2023. | Report |
| [06] Tellus to DWER, 2019, Ministerial Statement 1078 – Compliance Assessment Report 2018/2019 – Tellus Holdings Ltd, Transmittal No.: SRDP001-000121, 23/09/2019, 01:07:00 PM. | Transmittal |
| [07] Draft Sandy Ridge 2023 Annual Waste Audit Report, KASA Consulting (Sept 2023) | Report |
| [08] Sandy Ridge Chemical Waste Acceptance Procedure – SR-09-PRO-004, V2. | Procedure |
| [09] Safe Work Procedure SR-08.808 Waste Acceptance Verification (07 July 2020) | Procedure |
| [10] SWP SR-08.221 Offsite Waste Verification Testing (20 Feb 21) | Procedure |
| [11] Safe Work Procedure SR-08. 809 Waste Quarantine (25 Mar 21) | Procedure |
| [12] Tellus, Leachate Monitoring and Management Plan, Version E, 7 May 2020, Ref: HS00-1760150200-49173. | Plan |
| [13] Tellus to DWER, 2019, Sandy Ridge Facility MS 1078 – revised LMMP Rev E, Transmittal No.: SRDP001-000345, 07 May 2020, 02:42:00 PM. | Transmittal |
| [14] Letter, DWER, 2020, Sandy Ridge Facility Ministerial Statement 1078 Leachate Monitoring and Management Plan Approved, 14/05/2020, Ref: DWERDT280973; DWERT463 | Letter |
| [15] Tellus, 2019, Flora and Vegetation Management Plan, V1, 19/06/2019, Ref: HS00-1760150200-22152. | Plan |
| [16] DWER, 2019, Sandy Ridge Facility MS 1078 Flora and Vegetation Management Plan Approved, 01/07/2019, Ref: DWERA-002019. | Letter |
| [17] DWER_CAR 2018-2019_Desktop Audit Report_2020 10 24.pdf | Report |
| [18] Condition Assessment, <i>Lepidosperma spp.</i> Sandy Ridge. Report WB932, Western Botanical, June 2021. | Report |
| [19] Tellus, 2019c, Construction Fauna Management Plan, 13/06/2019, V1, Ref: HS00-1760150200-22117. | Letter |
| [20] Letter, DWER, 2019, Sandy Ridge Facility MS 1078 Construction Fauna Management Plan Approved, 25/06/2019, Ref: DWERA-002019. | Form |
| [21] Tellus, 2018, Sandy Ridge Facility Statement Number 1078 Condition 12-1 – request for extension, 07/12/2018, Ref: HS00-1760150200-20468. | Letter |
| [22] DWER, 2018, Statement 1078, Sandy Ridge Facility, Request for Extension on Condition 12-1, 17/12/2018, Ref: DWERA-001158. | Letter |
| [23] DWER, 2019, Sandy Ridge Facility, Ministerial Statement 1078, Waste Facility Decommissioning Closure Plan, Amendments Required, Ref: DWERDG 676/19, 29 November 2019. | Letter |

| | |
|--|----------------|
| [24] 2020, Sandy Ridge Facility Waste Facility Decommissioning Closure Plan, Ref: HS00-1760150200-45, V3, 6 February 2020. | Plan |
| [25] DWER, 2020, Sandy Ridge Facility, Ministerial Statement 1078, Waste Facility Decommissioning Closure Plan, Approved, Ref: DWERT4733, 27 February 2020. | Letter |
| [26] Tellus submission of renewed insurance certificates to DWER, 06 June 2023. | Email |
| [27] Chubb Premises Pollution Liability III Policy Wording. Policy No. 02CL036460.pdf | Policy |
| [28] Contractors Pollution Liability III Insurance Policy Claims – Made Coverage. Policy No. 02CL036460 pdf | Policy |
| [29] Environmental liability insurance extension. Willis Limited Global Markets International Contract Endorsement reference no. B080110056G19 (XL Insurance Company issued on behalf of SCOR Syndicate 2015 at Lloyd's) | Letter |
| [30] Report to DWER on adequacy of insurance policies, 11 Nov 2021. | Email |
| [31] DWER Acceptance of Bank Guarantee Ref: DWERA-001158, 12 June 2020 | Letter |
| [35] Landloch Sandy Ridge Soil Sampling_DRAFT_2020 07 16.pdf | Report |
| [36] Sandy Ridge Radiological Waste Acceptance Procedure – SR-09-PRO-031, V2. | Procedure |
| [37] 2021-22 Sandy Ridge Facility Annual Waste Audit Report | Report |
| [38] Tellus, 2023 Sandy Ridge Soil Audit – 2023 | Report |
| [39] Leachate Monitoring and Management Plan, V1. 22 November 2022 | Plan |
| [40] Flora and Vegetation Management Plan, V4. 13 October 2022 | Plan |
| [41] Fauna Management Plan, V1. 30 May 2022 | Plan |
| [42] Waste Facility Decommissioning Closure Plan, Rev 4. 18 August 2022 | Plan |
| [43] Works Approval W6700/2022/1 – Works Approval to construct three additional waste cells, to be known as Cell 2, Cell 3 and Cell 4. | Works Approval |
| [44] Institutional Control Period (ICP) Works Programme and Budget - 2023 | Report |
| [45] Notice of decision to consent to amend a referred proposal during assessment. Sandy Ridge Facility - Alignment of Gate Waste Acceptance Tonnage Assessment No. 2309. 22 August 2022. | Letter |
| [46] Alignment of Gate Waste Acceptance Tonnage – Environmental Review Document. Assessment Number 2309, 17 Feb. 2023 Rev 0 | Report |

5.2 External references

- A OEPA. 2012a. Post Assessment Guideline for Preparing an Audit Table, Post Assessment Guideline No. 1. August. Office of the Environmental Protection Authority. Perth, Western Australia.
- B OEPA. 2012b. Post Assessment Guideline for Preparing a Compliance Assessment Plan, Post Assessment Guideline No. 2. August. Office of the Environmental Protection Authority. Perth, Western Australia.
- C OEPA. 2012c. Post Assessment Guideline for Preparing a Compliance Assessment Report, Post Assessment Guideline No. 3. August. Office of the Environmental Protection Authority. Perth, Western Australia.
- D OEPA. 2012d. Post Assessment Guideline for Making Information Publicly Available, Post Assessment Guideline No. 4. August. Office of the Environmental Protection Authority. Perth, Western Australia.

Appendix A – Statement of Compliance

Appendix B – MS 1078 Audit Table

Appendix C – Compliance Status of Key Characteristics

Table C-1 – Compliance status of key characteristics, Table 2, Schedule 1 MS 1078

| Audit Code | Subject | Requirement | Status | Further Information | |
|------------|-------------------------|--|---|---|---|
| 1078:M1.1 | Proposal Implementation | When implementing the proposal, the proponent shall not exceed the authorised extent of the proposal as defined in Table 2 of Schedule 1, unless amendments to the proposal and the authorised extent of the proposal have been approved under the EP Act. | Compliant | The authorised extent of the proposal was not exceeded during the reporting period. | |
| | | Key Characteristic | Description | | |
| | | Mine pit/waste cells | Clearing up to 202.3 hectares of native vegetation within a 1,061 ha development envelope | Compliant | As of 1 July 2023, a total of 24.69 hectares of native vegetation within the development envelope had been cleared for mine pit/waste cells. |
| | | Associated infrastructure | Clearing up to 73.75 hectares of native vegetation with a 1,061 ha development envelope | Compliant | As of 1 July 2023, a total of 71.03 hectares of native vegetation within the development envelope had been cleared for associated infrastructure. |
| | | Class IV & V waste accepted at gate | up to 100,000 tonnes per annum | Compliant | A total of 16,595.43 tonnes (normalised) of waste was received during the reporting period. |
| | | Temporary waste storage on surface | up to 15,000 tonnes | Compliant | The temporary storage quantity is continually monitored and was not exceeded. |
| | | Maximum temporary storage time | up to 12 months | Non-compliant | The 12 month storage requirement was exceeded during the reporting period for 14 unsealed and 71 sealed radioactive sources and 611.9 tonnes of chemical waste. |
| | | Waste (including treated waste) disposed to waste cells | up to 280,000 tonnes per annum | Compliant | A total of 18,654.71 tonnes (normalised) of waste was permanently disposed of during the reporting period. |
| | | Water use | up to 0.18 gigalitres per annum | Compliant | A total of 0.019 gigalitres was used on site during the reporting period. |

Statement of Compliance

1. Proposal and Proponent Details

| | |
|--|-----------------------------|
| Proposal Title | <i>Sandy Ridge Facility</i> |
| Statement Number | <i>1078</i> |
| Proponent Name | <i>Tellus Holdings Ltd</i> |
| Proponent's Australian Company Number <i>(where relevant)</i> | 138 119 829 |

2. Statement of Compliance Details

| | |
|------------------|-----------------------------|
| Reporting Period | <i>27/06/22 to 30/06/23</i> |
|------------------|-----------------------------|

| | | | | | | | |
|---|--------------------------|--------------|--------------------------|-----------|-------------------------------------|-----------------|--------------------------|
| Implementation phase(s) during reporting period (please tick ✓ relevant phase(s)) | | | | | | | |
| Pre-construction | <input type="checkbox"/> | Construction | <input type="checkbox"/> | Operation | <input checked="" type="checkbox"/> | Decommissioning | <input type="checkbox"/> |

| | |
|--|---|
| Audit Table for Statement addressed in this Statement of Compliance is provided at Attachment: | 2 |
|--|---|

An audit table for the Statement addressed in this Statement of Compliance must be provided as Attachment 2 to this Statement of Compliance. The audit table must be prepared and maintained in accordance with the Department of Water and Environmental Regulation (DWER) *Post Assessment Guideline for Preparing an Audit Table*, as amended from time to time. The 'Status Column' of the audit table must accurately describe the compliance status of each implementation condition and/or procedure for the reporting period of this Statement of Compliance. The terms that may be used by the proponent in the 'Status Column' of the audit table are limited to the Compliance Status Terms listed and defined in Table 1 of Attachment 1.

NOTE: this statement of compliance includes the findings of the Independent Annual Audit required by condition 8-2.

| | | | |
|--|-------------------------------------|-----------------------------------|--------------------------|
| Were all implementation conditions and/or procedures of the Statement complied with within the reporting period? (please tick ✓ the appropriate box) | | | |
| No (please proceed to Section 3) | <input checked="" type="checkbox"/> | Yes (please proceed to Section 4) | <input type="checkbox"/> |

3. Details of Non-compliance(s) and/or Potential Non-compliance(s)

The information required Section 3 must be provided for each non-compliance or potential non-compliance identified during the reporting period covered by this Statement of Compliance.

Non-compliance/potential non-compliance 3-1

| | |
|--|-----------------------------|
| Which implementation condition or procedure was non-compliant or potentially non-compliant? | |
| 1-1 | |
| Was the implementation condition or procedure non-compliant or potentially non-compliant? | |
| Non-compliant | |
| On what date(s) did the non-compliance or potential non-compliance occur (if applicable)? | |
| An email dated 21 February 2022 was sent by Tellus Holdings Ltd to the Department of Water and Environment Regulation (the department) advising that two (2) consignments of waste stored at the Sandy Ridge facility were approaching the 12 month storage limit detailed in Table 2 of Schedule 1 of Ministerial Statement 1078 and Table 3 of Condition 7 of licence L9240/2020/1. Tellus advised the department that the 12-month storage timeframe for the consignments of waste would be reached on 8 March 2022 and 8 April 2022. | |
| Was this non-compliance or potential non-compliance reported to the Chief Executive Officer, DWER? | |
| <input checked="" type="checkbox"/> Yes <input type="checkbox"/> Reported to DWER verbally Date _____ <input type="checkbox"/> Reported to DWER in writing Date <u>21/02/2022</u> | <input type="checkbox"/> No |
| What are the details of the non-compliance or potential non-compliance and where relevant, the extent of and impacts associated with the non-compliance or potential non-compliance? | |
| As of the end of the reporting period (26/06/2023) the extent of the proposal, as defined in Table 2 of Schedule 1 has been exceeded regarding, that the maximum temporary storage time of 12 months had been exceeded for 14 unsealed and 71 sealed radioactive sources and 611.9 tonnes of chemical waste. | |
| What is the precise location where the non-compliance or potential non-compliance occurred (if applicable)? (please provide this information as a map or GIS co-ordinates) | |
| All radioactive material continues to be stored in the Radioactive Waste Storage Yard, in accordance with Radiation Management Plan approved by the WA Radiological Council in March 2021. | |
| What was the cause(s) of the non-compliance or potential non-compliance? | |
| <p>Temporary storage of radioactive material has exceeded 12 months due to a delay in regulatory approval.</p> <p>Temporary storage of liquid waste not suited for treatment in the Waste Immobilisation Plant (WIP) has exceeded 12 months due to regulatory delays in allowing the processing of liquid waste outside of the WIP.</p> | |

What remedial and/or corrective action(s), if any, were taken or are proposed to be taken in response to the non-compliance or potential non-compliance?

All radioactive materials stored at the Facility are contained in accordance with the approved Radiation Management Plan. This is confirmed by regular RSO inspections and daily Facility Manager inspections.

All radioactive material at Sandy Ridge is included in the Radioactive Material Storage Manifest, which is submitted to the Radiation Health Unit (Department of Health) monthly.

All radioactive material that has been stored at the Sandy Ridge Facility (Facility) will be monitored and managed appropriately until such time as the waste is transported and stored at an alternative offsite location, or Tellus is granted approval to place the waste consignments within the waste cell at the Facility.

Mitigation measures currently in use, as required by the Facility's Site Registration (RS 210/2018 30289), include:

- Radioactive material is stored within the 'low level radiation waste warehouse' and 'LLW, liquid waste storage yard', numbered as 21 and 24 respectively on Figure 3: Infrastructure Areas of Schedule 1 in the DWER Licence.
- All radioactive material is currently stored with three levels of containment, provided by the sealed package (bulka-bag, drum, IBC, etc.), within a sealed shipping container and located within an appropriately bunded storage area.
- Environmental gamma radiation surveys around the boundary of and within the radioactive material storage area are undertaken in accordance with the approved RMP.
- Surface wipe testing around the containers within the storage areas in accordance with the approved RMP. • Regular inspections by the Facility Manager and Radiation Safety Officer (RSO), including checks of the condition of the shipping container(s).
- Air quality monitoring in accordance with the approved RMP.
- Personnel dose monitoring in accordance with the approved RMP.

What measures, if any, were in place to prevent the non-compliance or potential non-compliance before it occurred? What, if any, amendments have been made to those measures to prevent re-occurrence?

On 29 April 2022, Tellus submitted an updated Safety Case for the permanent isolation of radioactive material at the Facility. The Safety Case was approved by the Radiological Council of WA on 8 November 2022.

An amendment to L9420/2020/1 to authorise the treatment of liquid waste outside of the WIP was granted in June 2023. Portable facilities to process liquid wastes that cannot be treated in the WIP are expected to be operational by the end of 2023.

Please provide information/documentation collected and recorded in relation to this implementation condition or procedure:

- in the reporting period addressed in this Statement of Compliance; and
- as outlined in the approved Compliance Assessment Plan for the Statement addressed in this Statement of Compliance.

(the above information may be provided as an attachment to this Statement of Compliance)

Non-compliance/potential non-compliance 3-2

| |
|---|
| Which implementation condition or procedure was non-compliant or potentially non-compliant? |
| 7-3(4) |
| Was the implementation condition or procedure non-compliant or potentially non-compliant? |
| Potentially non-compliant |
| On what date(s) did the non-compliance or potential non-compliance occur (if applicable)? |
| N/A |

| | |
|--|-----------------------------|
| Was this non-compliance or potential non-compliance reported to the Chief Executive Officer, DWER? | |
| <input checked="" type="checkbox"/> Yes <input type="checkbox"/> Reported to DWER verbally Date _____ <input type="checkbox"/> Reported to DWER in writing Date <u>23/09/2021</u> | <input type="checkbox"/> No |
| What are the details of the non-compliance or potential non-compliance and where relevant, the extent of and impacts associated with the non-compliance or potential non-compliance? | |
| <p>The audit identified that specific coordinates for the location of each waste package stored in the waste cells and temporary storage area was not fully recorded. Details of waste characteristics, quantity and storage duration were readily available; however, the specific coordinates for the locations of each waste package stored in the waste cells and temporary storage area were not available. The annual waste audit identified that only the specific locations of certain high-risk wastes are surveyed once placed in the cell. Less hazardous and bulk wastes placed in the waste cell are surveyed as being within a particular lift. The cell floor is surveyed a minimum of monthly; however, the specific coordinates of each waste are not recorded.</p> | |
| What is the precise location where the non-compliance or potential non-compliance occurred (if applicable)? (please provide this information as a map or GIS co-ordinates) | |
| Waste cell 1 and temporary storage area | |
| What was the cause(s) of the non-compliance or potential non-compliance? | |
| <p>Temporary above-ground waste storage locations were not surveyed because they were readily identifiable and clearly labelled.</p> <p>Tellus's interpretation of the condition was that by surveying each lift of the cell the waste location was being provided with sufficient accuracy. Due to some compatible wastes being co-disposed and not being in packaging it is not possible to define a precise location. In addition to each lift of the waste cell being surveyed, a daily photographic record of the disposal location of each waste package was maintained.</p> | |

What remedial and/or corrective action(s), if any, were taken or are proposed to be taken in response to the non-compliance or potential non-compliance?

Tellus has requested that Conditions 7-3(4) is excluded from the new Ministerial Statement for the Proposal titled 'Alignment of gate waste acceptance tonnage (Assessment Number 2309).

Since the Notice of Non-Compliance was issued on 4 January 2022, Tellus has undertaken the following relevant changes to the Waste Management System, including operating practices and procedures:

1. The frequency of complete cell floor surveys, undertaken with high accuracy (<5 cm) DGPS survey equipment. These surveys were previously being done upon the completion of each 'lift' or waste layer, which depending upon waste deliveries, could be once every 6-10 weeks or longer. Cell floor surveys are now done at the end of each calendar month, regardless of the completion status of each waste level. Monthly surveying started at the end of December 2021.

2. Daily photographic records of waste placement. Since DGPS surveying of individual waste packages (other than high risk wastes as mentioned) is not practically achievable, Tellus is implementing a visual recording system, consisting of a high-resolution digital camera which will take and record time-stamped images of the cell at set times each day. Until this system was operational, manual photographs were taken once a day and retained in a log.

What measures, if any, were in place to prevent the non-compliance or potential non-compliance before it occurred? What, if any, amendments have been made to those measures to prevent re-occurrence?

None

Please provide information/documentation collected and recorded in relation to this implementation condition or procedure:

- in the reporting period addressed in this Statement of Compliance; and
- as outlined in the approved Compliance Assessment Plan for the Statement addressed in this Statement of Compliance.

(the above information may be provided as an attachment to this Statement of Compliance)

Non-compliance/potential non-compliance 3-3

| |
|---|
| Which implementation condition or procedure was non-compliant or potentially non-compliant? |
| 8-1(2) |
| Was the implementation condition or procedure non-compliant or potentially non-compliant? |
| Non-compliant |
| On what date(s) did the non-compliance or potential non-compliance occur (if applicable)? |
| N/A |

| | |
|--|--|
| Was this non-compliance or potential non-compliance reported to the Chief Executive Officer, DWER? | |
| <input type="checkbox"/> Yes <input type="checkbox"/> Reported to DWER verbally Date _____ <input type="checkbox"/> Reported to DWER in writing Date _____ | <input checked="" type="checkbox"/> No |
| What are the details of the non-compliance or potential non-compliance and where relevant, the extent of and impacts associated with the non-compliance or potential non-compliance? | |
| The facility has not been managed in accordance with all regulatory requirements. An audit of the site Environmental Licence L9240-2020 identified 2 non-compliances, which were reported through the 2022/23 Annual Audit Compliance Report (AACR). | |
| What is the precise location where the non-compliance or potential non-compliance occurred (if applicable)? (please provide this information as a map or GIS co-ordinates) | |
| N/A - Administrative | |
| What was the cause(s) of the non-compliance or potential non-compliance? | |
| Failure to comply with requirements defined in the Environmental Licence L9240-2020 (see Sandy Ridge 2022/23 Annual Environmental Report). | |
| What remedial and/or corrective action(s), if any, were taken or are proposed to be taken in response to the non-compliance or potential non-compliance? | |
| Remedial actions are defined in the 2022/23 AACR. | |
| What measures, if any, were in place to prevent the non-compliance or potential non-compliance before it occurred? What, if any, amendments have been made to those measures to prevent re-occurrence? | |
| Non-compliances were administrative. See 2022/23 AACR. | |
| Please provide information/documentation collected and recorded in relation to this implementation condition or procedure: | |
| <ul style="list-style-type: none"> in the reporting period addressed in this Statement of Compliance; and as outlined in the approved Compliance Assessment Plan for the Statement addressed in this Statement of Compliance. (the above information may be provided as an attachment to this Statement of Compliance) | |

4. Proponent Declaration

I, Pascoe Murison, (Chief Operating Officer), declare that I am authorised on behalf of Tellus Holdings Ltd [ABN 97 138 119 829] (being the person responsible for the proposal) to submit this form and that the information contained in this form is true and not misleading.

Signature



Date: 22/09/2023

Please note that:

- it is an offence under section 112 of the *Environmental Protection Act 1986* for a person to give or cause to be given information that to his knowledge is false or misleading in a material particular; and
- the Chief Executive Officer of the DWER has powers under section 47(2) of the *Environmental Protection Act 1986* to require reports and information about implementation of the proposal to which the statement relates and compliance with the implementation conditions.

5. Submission of Statement of Compliance

One hard copy and one electronic copy (preferably PDF on CD or thumb drive) of the Statement of Compliance are required to be submitted to the Chief Executive Officer, DWER, marked to the attention of Manager, Compliance (Ministerial Statements).

Please note, the DWER has adopted a procedure of providing written acknowledgment of receipt of all Statements of Compliance submitted by the proponent, however, the DWER does not approve Statements of Compliance.

6. Contact Information

Queries regarding Statements of Compliance, or other issues of compliance relevant to a Statement may be directed to Compliance (Ministerial Statements), DWER:

Manager, Compliance (Ministerial Statements)

Department of Water and Environmental Regulation

Postal Address: Locked Bag 10
Joondalup DC
WA 6919

Phone: (08) 6364 7000

Email: compliance@dwer.wa.gov.au

7. Post Assessment Guidelines and Forms

Post assessment documents can be found at www.epa.wa.gov.au

Each page (including Attachment 2) must be initialed by the person who signs Section 4 of this Statement of Compliance.
INITIALS: PM

ATTACHMENT 1

Table 1 Compliance Status Terms

| Compliance Status Terms | Abbrev | Definition | Notes |
|----------------------------|--------|---|---|
| Compliant | C | Implementation of the proposal has been carried out in accordance with the requirements of the audit element. | This term applies to audit elements with: <ul style="list-style-type: none"> ongoing requirements that have been met during the reporting period; and requirements with a finite period of application that have been met during the reporting period, but whose status has not yet been classified as 'completed'. |
| Completed | CLD | A requirement with a finite period of application has been satisfactorily completed. | This term may only be used where: <ul style="list-style-type: none"> audit elements have a finite period of application (e.g. construction activities, development of a document); the action has been satisfactorily completed; and the DWER has provided written acceptance of 'completed' status for the audit element. |
| Not required at this stage | NR | The requirements of the audit element were not triggered during the reporting period. | This should be consistent with the 'Phase' column of the audit table. |
| Potentially Non-compliant | PNC | Possible or likely failure to meet the requirements of the audit element. | This term may apply where during the reporting period the proponent has identified a potential non-compliance and has not yet finalized its investigations to determine whether non-compliance has occurred. |
| Non-compliant | NC | Implementation of the proposal has not been carried out in accordance with the requirements of the audit element. | This term applies where the requirements of the audit element are not "complete" have not been met during the reporting period. |
| In Process | IP | Where an audit element requires a management or monitoring plan be submitted to the DWER or another government agency for approval, that submission has been made and no further information or changes have been requested by the DWER or the other government agency and assessment by the DWER or other government agency for approval is still pending. | The term 'In Process' may not be used for any purpose other than that stated in the Definition Column. The term 'In Process' may not be used to describe the compliance status of an implementation condition and/or procedure that requires implementation throughout the life of the project (e.g. implementation of a management plan). |

Each page (including Attachment 2) must be initialed by the person who signs Section 4 of this Statement of Compliance.

INITIALS: PM

- **Phases that apply in this Audit Table:** Pre-Construction, Construction, Operation, Decommissioning, Overall (several phases).
- **This Audit Table is a summary of the requirements applying to this Proposal.** Refer to the Ministerial Statement issued for the proposal under Part IV of the EP Act for details/precise wording of audit elements.
- **Code prefixes:** M = Minister’s condition, P = Proponent’s commitment, N = Procedure.
- **Abbreviations:** CAR = Compliance Assessment Report; CEO = Chief Executive Officer of Department of Water and Environmental Regulation; Minister for Env = Minister for the Environment; OEPA = Office of the Environmental Protection Authority.
- **Compliance Status:** C = Compliant, CLD = Completed, NR = Not Required at this stage, PNC = Partial Non-compliance, NC = Non-compliant, IP = In Process.

Table B-1 – Audit Table

| Audit Code | Subject | Requirement | How | Evidence ¹ | Phase | Timeframe | Status | Further Information |
|------------|--|--|---|--|------------------|---|--------|--|
| 1078:M1.1 | Proposal Implementation | When implementing the proposal, the proponent shall not exceed the authorised extent of the proposal as defined in Table 2 of Schedule 1, unless amendments to the proposal and the authorised extent of the proposal have been approved under the EP Act. | Project to be implemented in accordance with the criteria outlined in Table 2 of Schedule 1 of MS 1078. | [07] Draft Sandy Ridge 2023 Annual Waste Audit Report. | Overall | Annually | NC | The extent of the proposal, as defined in Table 2 of Schedule 1 has been exceeded regarding the maximum temporary storage time of 12 months had been exceeded for 14 unsealed and 71 sealed radioactive sources and 611.9 tonnes chemical waste. |
| 1078:M2.1 | Contact Details | The proponent shall notify the CEO of any change of its name, physical address or postal address for the serving of notices or other correspondence within twenty-eight (28) days of such change. Where the proponent is a corporation or an association of persons, whether incorporated or not, the postal address is that of the principal place of business or of the principal office in the State. | Notify the CEO in writing of any change to proponent details. | - | Overall | Within 28 days of such a change. | C | Tellus’ principal place of business, Sydney, New South Wales, remained unchanged during the reporting period. The Facility’s Project office in Perth remained unchanged during the reporting period. All government departments are provided with the following email address to sending formal correspondence to Tellus: SR.Management@tellusholdings.com |
| 1078:M3.1 | Time Limit for Proposal Implementation | The proponent shall not commence implementation of the proposal after five (5) years from the date on this Statement, and any commencement, prior to this date, must be substantial. | Provide written evidence to the CEO to demonstrate that the proposal has substantially commenced. | [01] Tellus, 2020. 2019/2020 Compliance Assessment Report (Ref. GRACE-552978189-22917). | Construction | Implement proposal within five years from the date MS 1078 was granted. | CLD | Substantial works commenced as follows: <ul style="list-style-type: none"> • Stage 1 enabling works commenced on 7 July 2019. • Stage 2A construction works commenced in Quarter 3 2019. • Stage 2B balance of works commenced in Q1 2020. DWER notified via submission of the 2019/2020 CAR. |
| 1078:M3.2 | Time Limit for Proposal Implementation | Any commencement of implementation of the proposal, on or before five (5) years from the date of this Statement, must be demonstrated as substantial by providing the CEO with written evidence, on or before the expiration of five (5) years from the date of this Statement. | Provide written evidence to the CEO to demonstrate that the proposal has substantially commenced. | [01] | Construction | Implement proposal within five years from the date MS 1078 was granted. | CLD | As above |
| 1078: N4.1 | Compliance Reporting | The proponent shall prepare and maintain a Compliance Assessment Plan which is submitted to the CEO at least six (6) months prior to the first Compliance Assessment Report required by condition 4-6, or prior to implementation of the proposal, whichever is sooner. | Develop and implement a CAP. Submit the Compliance Assessment Plan to the CEO. | [02] Tellus, 2018, Sandy Ridge Compliance Assessment Plan, 29/11/2018, Ref: HS00-1760150200/TSR-5-HO-0220-AP-PLN-0001, V0. [03] Transmittal No.: THL001-000413, Subject: MS 1078 Sandy Ridge Facility - Compliance Assessment Plan, 29/11/2018. [04] Letter, DWER, 2018, Statement 1078 Sandy Ridge Facility CAO, 17/12/2018, Ref: DWERA-001158. | Pre-construction | At least six months prior to the first CAR required by MS 1078, Condition 4-6, or prior to implementation, whichever is sooner. | C | A Compliance Assessment Plan (CAP) [02] prepared by Tellus was submitted to the CEO on 29 November 2018. The CAP was approved by the CEO on 17 December 2018. The first Compliance Assessment Report (CAR) [01] to be submitted for MS 1078 was submitted on 23 September 2019, ten months after the CAP was submitted to the CEO and prior to implementation of the proposal. In their letter of approval dated 17 December 2018 DWER [3] stated that “ <i>as per Condition 4-6 of Statement 1078, your first compliance assessment report is due by 27 September 2019</i> ”. There were no changes made to the CAP during the reporting period. |

¹ Refer to Section 5.1 Supporting, verifying information, documentation.

| Audit Code | Subject | Requirement | How | Evidence ¹ | Phase | Timeframe | Status | Further Information |
|--------------|----------------------|--|---|---|------------------|---|--------|---|
| 1078: N4.2 | Compliance Reporting | The Compliance Assessment Plan shall indicate: | - | - | - | - | - | - |
| 1078: N4.2.1 | Compliance Reporting | <ul style="list-style-type: none"> the frequency of compliance reporting; | Submit the CAP to the CEO. | [02] | Pre-construction | At least six months prior to the first CAR required by MS 1078, C 4-6, or prior to implementation, whichever is sooner. | C | In their letter of approval dated 17 December 2018 DWER [3] stated that "DWER had reviewed the CAP and determined that it meets the requirements of Conditions 4-1 and 4-2 of Statement 1078". |
| 1078: N4.2.2 | Compliance Reporting | <ul style="list-style-type: none"> the approach and timing of compliance assessments; | Submit the CAP to the CEO. | [02] | Pre-construction | As above | C | As above |
| 1078: N4.2.3 | Compliance Reporting | <ul style="list-style-type: none"> the retention of compliance assessments; | Submit the CAP to the CEO. | [02] | Pre-construction | As above | C | As above |
| 1078: N4.2.4 | Compliance Reporting | <ul style="list-style-type: none"> the method of reporting of potential non-compliances and corrective actions taken; | Submit the CAP to the CEO. | [02] | Pre-construction | As above | C | As above |
| 1078: N4.2.5 | Compliance Reporting | <ul style="list-style-type: none"> the table of contents of Compliance Assessment Reports; and | Submit the CAP to the CEO. | [02] | Pre-construction | As above | C | As above |
| 1078: N4.2.6 | Compliance Reporting | <ul style="list-style-type: none"> public availability of Compliance Assessment Reports. | Submit the CAP to the CEO. | [02] | Pre-construction | As above | C | As above |
| 1078:M4.3 | Compliance Reporting | After receiving notice in writing from the CEO that the Compliance Assessment Plan satisfies the requirements of condition 4-2, the proponent shall assess compliance with conditions in accordance with the Compliance Assessment Plan required by condition 4-1. | Once notice is received that the CEO is satisfied, commence compliance assessment in accordance with the CAP. | [05] Tellus, 2023, Compliance Assessment Report 2022/2023. | Overall | Once written approval of the CAP is received from the CEO. | C | Compliance assessments are undertaken annually and submitted to DWER via the annual Compliance Assessment Report (CAR). This 2022/23 CAR reports on the assessment undertaken against the CAP for the 2022/23 reporting period. |
| 1078: P4.4 | Compliance Reporting | The proponent shall retain reports of all compliance assessments described in the Compliance Assessment Plan required by condition 4-1 and shall make those reports available when requested by the CEO. | Retain CAR's and make available to the CEO when requested. | [01], [05] Tellus Website | Overall | When requested by the CEO. | C | All previous CARs are available in the Sandy Ridge Regulatory Information section of the Tellus website (www.tellusholdings.com). |
| 1078: P4.5 | Compliance Reporting | The proponent shall advise the CEO of any potential non-compliance within seven (7) days of that non-compliance being known. | Notify the CEO of potential non-compliances in accordance with the process described in Section 2.5.2 of the CAP. | [05] | Overall | Within seven days of that potential non-compliance being known. | C | Through the process of preparing this current report 2 non-compliances against the requirements of MS 1078 have been identified. Compliance with this Condition with respect to these non-compliances will be reported via submission of this 2022-2023 CAR (Table 3-3). |
| 1078: P4.6 | Compliance Reporting | The proponent shall submit to the CEO the first Compliance Assessment Report fifteen (15) months from the date of issue of this Statement addressing the twelve (12) month period from the date of issue of this Statement and then annually from the date of submission of the first Compliance Assessment Report , or as otherwise agreed in writing by the CEO. | Submit a CAR within required timeframe reporting on the previous 12 months. | [01], [02], [05] [06] Transmittal – Tellus to DWER, 2019, Ministerial Statement 1078 – Compliance Assessment Report 2018/2019 – Tellus Holdings Ltd, Transmittal No.: SRDP001-000121, 23/09/2019, 01:07:00 PM. | Overall | Initial CAR within 15 months from date of MS 1078 (i.e. 27 September 2019). Subsequent CARs annually from date of submission of first CAR or a date as agreed in writing by CEO. | C | The first CAR [01] was submitted [06] on 23 September 2019. Subsequent CARs have been submitted by 23 September each year and are available in the Sandy Ridge Regulatory Information section of the Tellus website (www.tellusholdings.com). In accordance with the approved CAP [02], this CAR [05] will be made publicly available. |
| 1078:M4.6 | Compliance Reporting | The Compliance Assessment Report shall: | - | - | - | - | - | - |
| 1078:M4.6.1 | Compliance Reporting | <ul style="list-style-type: none"> be endorsed by the proponent's CEO or a person delegated to sign on the CEO's behalf; | The Tellus CEO, or delegate to endorse the CAR. | [01], [05] | Overall | Initial CAR within 15 months from date of MS 1078. | C | All CARs (including this one) have been signed by the Chief Operating Officer of Tellus Holdings Ltd. |
| 1078:M4.6.2 | Compliance Reporting | <ul style="list-style-type: none"> include a statement as to whether the proponent has complied with the conditions; | Include a statement as to whether the Facility has complied with the conditions of MS 1078. | [01], [05] | Overall | Subsequent CARs annually from date of submission of first CAR or | C | All CARs (including this one) have included a Statement of Compliance signed by the Chief Operating Officer of Tellus Holdings Ltd as an appendix. |

| Audit Code | Subject | Requirement | How | Evidence ¹ | Phase | Timeframe | Status | Further Information |
|-------------|-------------------------------|--|--|---|------------|--|--------|---|
| 1078:M4.6.3 | Compliance Reporting | <ul style="list-style-type: none"> identify all potential non-compliances and describe corrective and preventative actions taken; | Include a statement as to whether there have been any potential non-compliances associated with MS 1078 for the reporting period. | [01], [05] | Overall | a date as agreed in writing by CEO. | C | All previous CARs have included a Statement of Compliance signed by the Chief Operating Officer of Tellus Holdings Ltd. As an appendix. Identified non-compliances were documented within the CAR (Table 3-3) and are raised within the Tellus corrective action system (INX InControl). |
| 1078:M4.6.4 | Compliance Reporting | <ul style="list-style-type: none"> be made publicly available in accordance with the approved Compliance Assessment Plan; and | Make the CAR publicly available. | [05] Tellus Website | Overall | | C | In accordance with the approved CAP [02], this CAR will be made publicly available via the Sandy Ridge Regulatory Information section of the Tellus website (www.tellusholdings.com). |
| 1078:M4.6.5 | Compliance Reporting | <ul style="list-style-type: none"> indicate any proposed changes to the Compliance Assessment Plan required by condition 4-1. | Indicate in the CAR any proposed changes to the CAP required by MS 1078, Condition 4-1. | [01], [05] | Overall | | C | No changes were made to the CAP during the reporting period. |
| 1078: P5.1 | Public Availability of Data | Subject to condition 5-2, within a reasonable time period approved by the CEO of the issue of this Statement and for the remainder of the life of the proposal, the proponent shall make publicly available, in a manner approved by the CEO, all validated environmental data (including sampling design, sampling methodologies, empirical data and derived information products (e.g. maps)) relevant to the assessment of this proposal and implementation of this Statement. | Validated environmental data (including sampling design, sampling methodologies, empirical data and derived information products (e.g. maps)) relevant to the assessment of this proposal and implementation of this Statement to be made available on the Sandy Ridge Facility section of the Tellus website. | Tellus website: www.tellusholdings.com | Overall | For the life of the proposal as approved by the CEO. | C | All environmental data associated with the assessment of the proposal was made available through the Sandy Ridge Public Environmental Review link on the Sandy Ridge Regulatory Information page of the Tellus website. Environmental data relevant to implementation of the project with this CAR will also be made progressively available as through the Tellus website as the project progresses. |
| 1078:M5.2 | Public Availability of Data | <p>If any data referred to in condition 5-1 contains particulars of:</p> <ul style="list-style-type: none"> a secret formula or process; or confidential commercially sensitive information; <p>the proponent may submit a request for approval from the CEO to not make these data publicly available. In making such a request the proponent shall provide the CEO with an explanation and reasons why the data should not be made publicly available.</p> | Submit a request for approval to the CEO not make sensitive information publicly available. | - | Overall | As required. | NR | This requirement was not triggered during the reporting period. |
| 1078:M6.1 | Boundary for Waste Generation | The proponent shall ensure that only wastes generated within Western Australia, other Australian States and Territories, and the Australian Exclusive Economic Zone are accepted at the Sandy Ridge Facility. | <p>Tellus will implement a Waste Acceptance Criteria for each client that will specify:</p> <ul style="list-style-type: none"> The criteria that will be applied for the exclusion of certain types of waste. The criteria that will be applied to the acceptance of certain types of waste. The requirement for suitable packaging and the criteria that will be applied for packaging acceptance. | <p>[07]</p> <p>[08] SR-09-PRO-004 Sandy Ridge Chemical Waste Acceptance Procedure.</p> <p>[36] SR-09-PRO-031 Sandy Ridge Radiological Waste Acceptance Procedure.</p> <p>[09] SWP SR-08.808 Waste Acceptance Verification.</p> <p>[10] SWP SR-08.221 Offsite Waste Verification Testing (20 Feb 21)</p> | Operations | During the operational life of the proposal. | C | Tellus has established procedures for the acceptance of chemical and radiological wastes, SR-09-PRO-004 Sandy Ridge Chemical Waste Acceptance Procedure and SR-09-PRO-031 Sandy Ridge Radiological Waste Acceptance Procedure. An audit of waste received on site during the reporting period (annual waste audit undertaken by KASA Consulting in July 2023, as required by Condition 8 of this proposal) identified that all waste received on site was generated within Australia (report currently in draft, due for submission by 28 September 2023). |
| 1078:M7.1 | Waste Management System | <p>The proponent shall manage the proposal to meet the following objective:</p> <ul style="list-style-type: none"> ensure that detailed records are kept of all wastes accepted on site. | Develop and implement a Waste Management System. | [07] | Operations | During the operational life of the proposal. | C | The annual waste audit for the 2022-2023 reporting period confirmed that detailed records were maintained for all wastes kept on site. |
| 1078: P7.2 | Waste Management System | The proponent shall implement and maintain a Waste Management System to record all wastes accepted on site. | Develop and implement a Waste Management System. | [07] | Operations | During the operational life of the proposal. | C | The annual waste audit for the 2022-2023 reporting period confirmed a waste management system had been established and had been maintained during the reporting period. |

| Audit Code | Subject | Requirement | How | Evidence ¹ | Phase | Timeframe | Status | Further Information |
|--------------|-------------------------|---|--|---|------------|--|--------|--|
| 1078:M7.3 | Waste Management System | The Waste Management System shall: | - | - | - | - | - | - |
| 1078: N7.3.1 | Waste Management System | <ul style="list-style-type: none"> detail monitoring procedures to track and record incoming waste to the site; | The Waste Management System will detail monitoring procedures to track and record incoming waste to the site. | [09], [10], [36] [11] SWP SR-08.809 Waste Quarantine Procedure | Operations | During the operational life of the proposal. | C | The Sandy Ridge Waste Acceptance procedures for chemical and radiological wastes define the process for accepting waste on site and these are supported by a flow chart for waste receipt that maps the processes for tracking and recording waste that arrives on site, including waste verification. The on-site procedures; Waste Acceptance Verification (SR-08.808), Offsite Waste Verification Testing (SR-08.221) and Waste Quarantine (SR-08.809), provide additional detail on the process for tracking and monitoring incoming waste. |
| 1078: P7.3.2 | Waste Management System | <ul style="list-style-type: none"> record the origins, quantity, and the physical and chemical characteristics of all waste accepted on site; | The Waste Management System will record the origins, quantity, and the physical and chemical characteristics of all waste accepted on site. | [07] | Operations | During the operational life of the proposal. | C | Extensive records are generated and maintained regarding the quantity, and the physical and chemical characteristics of all waste accepted on site. These include: <ul style="list-style-type: none"> Incoming waste vehicle spreadsheet. Waste receipt ticket. Controlled waste tracking form. Inbound heavy vehicle checklist. Waste verification records (in LIMS system). The annual waste audit for the 2022-2023 reporting period confirmed records were readily available and well maintained. |
| 1078: P7.3.3 | Waste Management System | <ul style="list-style-type: none"> provide details about any treatment of the waste undertaken on site; | The Waste Management System will provide details about any treatment of the waste undertaken on site. | [07] | Operations | During the operational life of the proposal. | C | The only materials treated on site prior to disposal are liquid wastes processed through the Waste Immobilisation Plant (WIP). Details of all wastes treated on site are recorded in the WIP Production Material Usage spreadsheet. During the reporting period, the only liquid waste treated through the Waste Isolation Plant (WIP) and disposed of to the waste disposal cell was PFAS contaminated liquid waste. The annual waste audit for the 2022-2023 reporting period confirmed treated waste records were readily available and well maintained. |
| 1078: P7.3.4 | Waste Management System | <ul style="list-style-type: none"> provide details about the waste characteristics, quantity, storage duration and specific coordinates for the location of each waste package stored in the waste cells and temporary storage area; and | The Waste Management System will provide details about the waste characteristics, quantity, storage duration and specific coordinates for the location of each waste package stored in the waste cells and temporary storage area. | [07] | Operations | During the operational life of the proposal. | PNC | The annual waste audit identified that records of waste characteristics, quantity and storage duration were readily available; however, as identified in during the current and previous annual waste audits, specific coordinates for the location of each waste package stored in the waste cells and temporary storage area was not accurately recorded. Temporary waste storage locations are not surveyed and Tellus consider that surveying each lift of the waste cell and taking a daily photographic record of the disposal location of each waste package is sufficient to meet the requirement; however, the coordinates of each waste package was not recorded. This non-compliance was first reported in the 2020-21 CAR. A request to remove Conditions 7-3(4) from MS 1078 was submitted to DWER on 8 September 2023 in Section 5.3.9.2 of the PER and is currently under review. |
| 1078: P7.3.5 | Waste Management System | <ul style="list-style-type: none"> be reviewed every five (5) years to ensure that all data stored in the Waste Management System remain compatible with contemporary information technology. | | - | Operations | Every five years. | NR | This requirement was not triggered during the reporting period. |

| Audit Code | Subject | Requirement | How | Evidence ¹ | Phase | Timeframe | Status | Further Information |
|--------------|--------------------------|---|---|------------------------------------|-----------------|--|--------|---|
| 1078:M7.4 | Waste Management System | The proponent shall continue to record all wastes accepted on site as required by condition 7-2 until cessation of waste receipt operations at the Sandy Ridge Facility. | Tellus will develop, implement and maintain a Waste Management System that will be available from the first waste receipt until the last waste receipt at the Sandy Ridge Facility. | [07] | Operations | Until cessation of waste receipt operations at the Sandy Ridge Facility. | C | Records of waste accepted on site during the reporting period were readily available via the monthly Incoming Waste Vehicle Spreadsheets. |
| 1078:M7.5 | Waste Management System | The proponent shall retain and maintain the data required by condition 7-2 and provide the data to the Western Australian Government at the completion of Phase I of the Institutional Control Period. | Tellus will provide Waste Management System data to the WA Government at completion of Phase I of the Institutional Control Period subject to successful criteria being reached. | - | Decommissioning | At the completion of Phase I of the Institutional Control Period. | NR | This requirement was not triggered during the reporting period. |
| 1078: P7.6 | Waste Management System | The proponent shall provide the data required by condition 7-2 to the CEO when requested within four (4) weeks of the request date. | Tellus will provide Waste Management System data to the CEO when requested. | - | Overall | Within four weeks of a data request from the CEO. | NR | This requirement was not triggered during the reporting period. At the time of preparing this CAR there had been no requests from the CEO during the reporting period for data required by Condition 7-2. |
| 1078:M8.1 | Independent Annual Audit | The proponent shall manage the implementation of the proposal to meet the following objectives: | - | - | - | - | - | - |
| 1078: P8.1.1 | Independent Annual Audit | <ul style="list-style-type: none"> ensure that only permitted wastes are accepted at the facility for placement in the repository; and | Tellus will develop and implement a Waste Acceptance Criteria (WAC) to determine waste types which can and cannot be accepted when considering the characteristics and design of the site to achieve safe operation of the facility and to ensure long term environmental protection through containment of potential pollutants present within the wastes. | [07], [08], [09], [10], [11], [36] | Operations | Annually | C | <p>The annual independent waste audit undertaken in July 2023 identified that there was a robust and well implemented process to ensure only permitted wastes are accepted at the facility. The process is defined in the Sandy Ridge Facility Waste Acceptance Procedure and involved detailed waste characterisation and assessment of waste using the Tellus Gated Waste Acceptance Form.</p> <p>The audit also identified that one consignment of waste (ammonium nitrate emulsion) was delivered at site without formal authorisation and this was quarantined in accordance with the Waste Quarantine Procedure SWP SR-08.809. Consultation with DWER and the client was ongoing at the time of writing regarding whether the waste could be accepted for permanent disposal.</p> |
| 1078: P8.1.2 | Independent Annual Audit | <ul style="list-style-type: none"> that the facility is managed in accordance with all regulatory requirements. | <p>Tellus will develop and implement a comprehensive Legal Obligations Register for the Sandy Ridge Facility. The register will include accountabilities for specific legislative requirements.</p> <p>Tellus will engage an on-site compliance officer who will be supported by the Tellus corporate compliance department.</p> | [07] | Operations | Annually | NC | <p>An audit of the site Environmental Licence L9240-2020 identified 2 non-compliances, which were reported through the 2022/23 Annual Audit Compliance Report (AACR).</p> <p>Tellus had established an Obligations Register within the Assurance module of INX InControl. Environmental legal obligations associated with government approvals for Sandy Ridge are documented in this module with defined responsibilities for evaluating compliance.</p> |
| 1078:M8.2 | Independent Annual Audit | The proponent shall engage an independent waste expert approved by the CEO to undertake an annual audit of the waste disposal operations at the Sandy Ridge Facility. The first audit shall be undertaken twelve (12) months from the date of waste acceptance. The audit shall address site operations, including whether: | Tellus will engage an independent waste specialist, approved by the CEO, to assess waste disposal operations in accordance with the requirements of MS 1078, Condition 8-2. | [07] | Operations | Within 12 months from the date of the first waste acceptance. | C | <p>Nick Croston of KASA Consulting was first engaged by Tellus as the independent auditor in 2021. Tellus Environmental Compliance Manager received approval from DWER to use Mr. Croston on 02 June 2021, in an email that stated, "The department acknowledges the independence of KASA consulting and advises that the department is satisfied that the appointment meets the requirements of Condition 8-2 of Ministerial Statement 1078". Mr. Croston was again engaged for the 2023 audit.</p> <p>Details regarding the extent to which the Sandy Ridge Facility complied with Condition 8 are provided in the Annual Independent Waste Audit report. A summary of findings is provided below.</p> |
| 1078:M8.2.1 | Independent Annual Audit | <ul style="list-style-type: none"> each waste is uniquely identified; | | [07] | Operations | Within 12 months from the date of the first waste acceptance. | C | The 2023 annual independent waste, undertaken in July 2023, audit included an assessment of whether each waste was uniquely identified. Audit findings are documented in the draft 2023 annual waste audit report. |

| Audit Code | Subject | Requirement | How | Evidence ¹ | Phase | Timeframe | Status | Further Information |
|-------------|--------------------------|---|---|---|---|---|--|---|
| 1078:M8.2.2 | Independent Annual Audit | <ul style="list-style-type: none"> the origin, quantity and characterisation of each waste is recorded; | | [07] | Operations | Within 12 months from the date of the first waste acceptance. | C | The 2023 annual independent waste audit included an assessment of whether the origin, quantity and characterisation of each waste was recorded. Audit findings are documented in the draft 2023 annual waste audit report. |
| 1078:M8.2.3 | Independent Annual Audit | <ul style="list-style-type: none"> the waste acceptance criteria and procedures have been adhered to; | | [07] | Operations | Within 12 months from the date of the first waste acceptance. | C | The 2023 annual independent waste audit included an assessment of whether waste acceptance criteria and procedures had been adhered to. Audit findings are documented in the draft 2023 annual waste audit report. |
| 1078:M8.2.4 | Independent Annual Audit | <ul style="list-style-type: none"> all required regulatory approvals and permits were in place for transport and disposal of the waste; | | [07] | Operations | Within 12 months from the date of the first waste acceptance. | C | The 2023 annual independent waste audit included an assessment of whether regulatory approvals and permits were in place for transport and disposal of the waste (based on an audited sample of waste deliveries). This included dangerous goods and radioactive waste approvals. Audit findings are documented in the draft 2023 annual waste audit report. |
| 1078:M8.2.5 | Independent Annual Audit | <ul style="list-style-type: none"> there is a clear and documented chain of custody from client to waste receipt; | | [07] | Operations | Within 12 months from the date of the first waste acceptance. | C | The 2023 annual independent waste audit included an assessment of whether there was a clear and documented chain of custody from client to waste receipt. Audit findings are documented in the draft 2023 annual waste audit report. |
| 1078:M8.2.6 | Independent Annual Audit | <ul style="list-style-type: none"> the final location of each waste in the waste cell is accurately recorded in three dimensions (northing, easting and elevation); | | [07] | Operations | Within 12 months from the date of the first waste acceptance. | C | The 2023 annual independent waste audit included an assessment of whether the final location of each waste in the waste cell is accurately recorded. Findings are documented in the draft 2023 annual waste audit report. |
| 1078:M8.2.7 | Independent Annual Audit | <ul style="list-style-type: none"> all regulatory requirements have been met; and | | [07] | Operations | - | C | The draft 2023 annual independent waste audit report addressed whether all regulatory requirements have been met. Audit findings are documented in the draft 2023 annual waste audit report. |
| 1078:M8.2.8 | Independent Annual Audit | <ul style="list-style-type: none"> other options have become available to reuse, recycle or recover wastes that are being accepted at the Sandy Ridge Facility. | | [07] | Operations | - | C | The draft 2023 annual independent waste audit report addressed whether the waste acceptance procedure requires the waste owner to confirm that they have assessed whether other options have become available to reuse, recycle or recover wastes that are being accepted at the Sandy Ridge Facility. Audit findings are documented in the draft 2023 annual waste audit report. |
| 1078:M8.3 | Independent Annual Audit | The proponent shall provide the annual audit report required by condition 8-2 to the CEO within twelve (12) weeks of the audit date until the CEO has confirmed by notice, in writing, that provision of the annual audit report is no longer required. | | Tellus will provide the Annual Audit Report to the CEO within 12 weeks of the audit date until such time as the CEO has confirmed in writing that the provision of the Annual Audit Report is no longer required. | [37] 2021-22 Sandy Ridge Facility Annual Waste Audit Report | Operations | Within 12 weeks of the audit date. The audit date is taken to be last day of the site audit (i.e. the date of the audit closing meeting). | C |
| 1078:M8.4 | Independent Annual Audit | In the event that the annual audit report identifies issues with waste acceptance, waste tracking or compliance with regulatory requirements, the proponent shall immediately notify the CEO, and other relevant regulators where a non-compliance against other legislation has occurred and implement investigations to identify the cause. | Notify the CEO of issues with waste acceptance, waste tracking or compliance with regulatory requirements, including those not related to the EP Act, in accordance with the process described in Section 2.5.1 of the CAP. | [05] [07] | Operations | Immediately ² | C | The CEO was notified of administrative non-compliances identified during the 2022 independent annual audit via the 2021-22 CAR and AER/AACR. Tellus notified DWER of the non-compliance against the 12-month temporary waste storage requirement in advance of the non-compliance occurring. |

² 'Immediately' means within eight hours or less from when the Company or its employees becomes aware of the non-compliance.

| Audit Code | Subject | Requirement | How | Evidence ¹ | Phase | Timeframe | Status | Further Information |
|--------------|-----------------------------------|---|--|--|------------|---|--------|--|
| 1078:M8.5 | Independent Annual Audit | Should the cause identified in condition 8-4 result in a potential risk to human health or a sensitive environmental receptor, then the proponent shall commence remedial actions immediately until otherwise advised by the CEO. | Tellus will implement remedial actions following detailed confirmatory investigation should the cause identified in MS 1078, Condition 8-4 result in a potential risk to human health or a sensitive environmental receptor. Tellus may seek external advice and guidance concerning the most appropriate remedial action depending on the potential risk to human health or a sensitive environmental receptor. | | Operations | Immediately | NR | No incidents have occurred on site that are considered a potential risk to human health or a sensitive environmental receptor. |
| 1078:M9.1 | Terrestrial Environmental Quality | The proponent shall manage the implementation of the proposal to meet the following environmental objective: <ul style="list-style-type: none"> ensure that impacts to soil quality are minimised. | <p>Construction and Operation - Emergency spill response kits will be available at strategic locations at the Sandy Ridge Facility.</p> <p>Construction and Operation - Staff will be trained in the use of emergency spill response kits and general environmental management awareness.</p> <p>Operations - Activities with the potential to impact soil quality will typically be conducted on hard stand with in-built drainage and sumps.</p> <p>Operations – Only authorised areas will be disturbed.</p> <p>Operations – Groundwater monitoring bores will be installed in the vicinity of the cells and periodically monitored to assess the potential impact to soil/groundwater from waste emplacement.</p> | <p>[12] Tellus, Leachate Monitoring and Management Plan, Version E³, 7 May 2020, Ref: HS00-1760150200-49173.</p> <p>[36] Landloch Pty Ltd, 2020, Sandy Ridge Project: Baseline Soil Audit for the Facility, Mt Walton Access Road and Sandy Ridge Facility Access Road, Ref: 2230.19b, 16 July 2020, Draft.</p> <p>[38] Sandy Ridge Soil Audit – 2023</p> | Overall | During the construction and operational life of the proposal. | C | <p>To address a requirement of the site’s Crown Lease and to provide a baseline from which to compare changes in soil properties over time Tellus engaged soil consultants to undertake two campaigns of soil sampling and analysis for selected analytes at specific locations. The first campaign was conducted in April 2019, the second campaign was conducted in January 2020. The soil was tested for Heavy Metals, Asbestos, Polychlorinated biphenyls (PCB), Perfluoroalkyl and Polyfluoroalkyl Substances (PFAS) and Radionuclides. A draft report was issued to Tellus in August 2020 [36] which concluded that “the audit results indicate that no significant environmental concerns currently exist for the soils that have been sampled”.</p> <p>Tellus is required to conduct a targeted soil quality audit every three years in accordance with Sandy Ridge’s Leachate Monitoring and Management Plan (LMMP). A survey was conducted in January 2023 (Sandy Ridge Soil Audit – 2023), which concluded that the level of soil contamination at Sandy Ridge is low, with the concentration of most analytes being similar to the 2020 baseline. All concentrations detected were lower than NEMP guidelines for residential properties with gardens (HIL B).</p> |
| 1078: N9.2 | Terrestrial Environmental Quality | Prior to the commencement of waste receipt, the proponent shall prepare and submit a Leachate Monitoring and Management Plan to the CEO, to demonstrate that the environmental objective in condition 9-1 will be met. | Develop and submit a Leachate Monitoring and Management Plan . | <p>[12]</p> <p>[13] Transmittal – Tellus to DWER, 2019, Sandy Ridge Facility MS 1078 – revised LMMP Rev E, Transmittal No.: SRDP001-000345, 07 May 2020, 02:42:00 PM.</p> <p>[14] Letter, DWER, 2020, Sandy Ridge Facility Ministerial Statement 1078 Leachate Monitoring and Management Plan Approved, 14/05/2020, Ref: DWERT280973; DWERT463.</p> | Operations | Prior to the commencement of waste receipt. | CLD | <p>Tellus prepared a Leachate Monitoring and Management Plan (LMMP) [12] and submitted to the CEO for approval on 7 May 2020 [13].</p> <p>The CEO approved the LMMP in a letter to Tellus [14] dated 14 May 2020 stating that “I am satisfied with the preparation of the Sandy Ridge Leachate Monitoring and Management Plan (Version E, 7 May 2020), and consider the requirements of condition 9-2 and 9-3 of Ministerial Statement 1078 have been met”.</p> |
| 1078: N9.3 | Terrestrial Environmental Quality | The Leachate Monitoring and Management Plan shall specify: | - | - | - | - | - | - |
| 1078: N9.3.1 | Terrestrial Environmental Quality | <ul style="list-style-type: none"> monitoring procedures and protocols, including monitoring location points and frequency of monitoring (minimum every six (6) months); | The Leachate Monitoring and Management Plan will specify monitoring procedures and protocols, including monitoring location points and frequency of monitoring. | [12] | Overall | Monitoring to be conducted at a minimum period of every six months. | CLD | Table 2-1 Provisions of the LLMP and its Appendix F Groundwater Monitoring Procedure address this requirement. |
| 1078: N9.3.2 | Terrestrial Environmental Quality | <ul style="list-style-type: none"> mitigation and management measures; | The Leachate Monitoring and Management Plan will include mitigation and management measures. | [12] | Overall | During the operational life of the proposal. | CLD | Table 2-1 Provisions of the LLMP addresses this requirement. |

³ Version E being the first approved version of this plan (i.e. Version 0).

| Audit Code | Subject | Requirement | How | Evidence ¹ | Phase | Timeframe | Status | Further Information |
|--------------|-----------------------------------|---|--|--|---------|--|--------|---|
| 1078: N9.3.3 | Terrestrial Environmental Quality | <ul style="list-style-type: none"> an adaptive management framework, including trigger criteria, monitoring design and methodologies, and trigger management actions; | The Leachate Monitoring and Management Plan will include an adaptive management framework, including trigger criteria, monitoring design and methodologies, and trigger management actions. | [12] | Overall | During the operational life of the proposal. | CLD | Section 3 Adaptive Management Framework and Section 3.1 Early Response Indicators address this requirement. |
| 1078: N9.3.4 | Terrestrial Environmental Quality | <ul style="list-style-type: none"> incident reporting; | The Leachate Monitoring and Management Plan will refer to the corporate incident reporting procedure for internal incident reporting requirements as well as external reporting requirements (e.g. to the OEPA). | [12] | Overall | During the operational life of the proposal. | CLD | Section 3.3 Incident Reporting addresses this requirement. |
| 1078: N9.3.5 | Terrestrial Environmental Quality | <ul style="list-style-type: none"> review periods; and | The Leachate Monitoring and Management Plan will include review periods. | [12] | Overall | During the operational life of the proposal. | CLD | Section 3.4 Continuous Improvement addresses this requirement. |
| 1078: N9.3.6 | Terrestrial Environmental Quality | <ul style="list-style-type: none"> implementation reporting and auditing. | The Leachate Monitoring and Management Plan will include requirements for implementation and auditing. | [12] | Overall | During the operational life of the proposal. | CLD | Section 3.4 Continuous Improvement and Section 3.5 Change Management addresses this requirement. |
| 1078:M9.4 | Terrestrial Environmental Quality | After receiving notice in writing from the CEO that the Leachate Monitoring and Management Plan satisfies the requirements of condition 9-1, the proponent shall: | - | - | - | - | - | - |
| 1078:M9.4.1 | Terrestrial Environmental Quality | <ul style="list-style-type: none"> implement the Leachate Monitoring and Management Plan, or any subsequent revisions as approved by the CEO; and | Once notice is received that the CEO is satisfied, commence implementation of the Leachate Monitoring and Management Plan. | [39] Leachate Monitoring and Management Plan, V1. 22 November 2022 | Overall | Once written approval of the Leachate Monitoring and Management Plan is received from the CEO. | IP | The LMMP was updated during the current reporting period and the revised LMMP (2022) [39] is currently with EPA/s for assessment as part of EPA Assessment No. 2309 for the <i>Alignment of Gate Waste Acceptance Tonnage</i> . The current approved LMMP was implemented during the reporting period. Refer to Table 3-5 of the CAR for details concerning implementation of the approved LLMP. |
| 1078:M9.4.2 | Terrestrial Environmental Quality | <ul style="list-style-type: none"> continue to implement the Leachate Monitoring and Management Plan, or any subsequent revisions as approved by the CEO, until the CEO has confirmed by notice in writing that the proponent has demonstrated the objective specified in condition 9-1 has been met and therefore the implementation of the management plan is no longer required. | Once written approval of the Leachate Monitoring and Management Plan is received from the CEO. | [12] | Overall | Until the CEO has confirmed by notice in writing that the implementation of the management plan is no longer required. | C | The current approved LMMP was implemented during the reporting period. Refer to Table 3-5 of the CAR for details concerning implementation of the approved LLMP. |
| 1078:M9.5 | Terrestrial Environmental Quality | The proponent may review and revise the Leachate Monitoring and Management Plan or any subsequently revisions as approved by the CEO. | Once written approval of the Leachate Monitoring and Management Plan is received from the CEO. | [39] | Overall | During the operational life of the proposal. | C | The LMMP was updated during the current reporting period and the revised LMMP (2022) is currently with EPA/s for assessment as part of EPA Assessment No. 2309 for the <i>Alignment of Gate Waste Acceptance Tonnage</i> . |
| 1078:M9.6 | Terrestrial Environmental Quality | The proponent shall review and revise the Leachate Monitoring and Management Plan or any subsequently approved revisions, as and when directed by the CEO. | Once notice is received from the CEO that the Leachate Monitoring and Management Plan must be reviewed and revised. | - | Overall | As and when directed by the CEO. | NR | This requirement was not triggered during the reporting period. |

| Audit Code | Subject | Requirement | How | Evidence ¹ | Phase | Timeframe | Status | Further Information |
|--------------|----------------------|--|---|--|---------|---|--------|---|
| 1078:M10.1 | Flora and Vegetation | The proponent shall manage the implementation of the proposal to meet the following environmental objectives: | Tellus will develop and implement a Flora and Vegetation Management Plan for construction and operational activities. | [15] Tellus, 2019, Flora and Vegetation Management Plan, V1, 19/06/2019, Ref: HS00-1760150200-22152. | Overall | During the construction and operational life of the proposal. | C | Tellus have prepared a Flora and Vegetation Management Plan (FVMP) [15] detailing how direct and indirect impacts to <i>Calytrix creswellii</i> , <i>Lepidosperma lyonsii</i> , and the undescribed <i>Lepidosperma</i> sp. were to be avoided and managed. The FVMP was approved by the CEO on 1 July 2019 [16]. |
| 1078:M10.1.1 | Flora and Vegetation | <ul style="list-style-type: none"> avoid direct impacts to <i>Calytrix creswellii</i>, <i>Lepidosperma lyonsii</i>, and the undescribed <i>Lepidosperma</i> sp. where practicable; and | Induction material for construction and operational staff will include species avoidance awareness. | [18] Western Botanical, June 2021. Condition Assessment, <i>Lepidosprema spp.</i> , <i>Sandy Ridge. WB931</i> [16] Letter, DWER, 2019, Sandy Ridge Facility MS 1078 Flora and Vegetation Management Plan Approved, 01/07/2019, Ref: DWERA-002019. [43] Works Approval W6700/2022/1 – Works Approval to construct three additional waste cells, to be known as Cell 2, Cell 3 and Cell 4. | | | | <p><u>Implementation</u></p> <p>Direct impacts on flora and vegetation from ongoing operation of the Facility is predominantly from clearing within the development envelope. MS 1078 has approved a total of 276.05 ha of native vegetation to be removed.</p> <p>During the operational phase clearing of vegetation will be periodic. A Works Approval (W6700/2022/1 [43]) was issued on 13/12/2022 to construct and operate a further three waste cells (Cells 2 to 4) at the Facility to provide waste storage for the next 2 to 6 years and up to 40 ha of native vegetation clearing is expected for development of these.</p> <p>The requirements of the FVMP were considered to be fully implemented during the reporting period. Refer to Table 3-5 of the CAR for details concerning implementation of the FVMP.</p> |
| 1078:M10.1.2 | Flora and Vegetation | <ul style="list-style-type: none"> manage indirect impacts to <i>Calytrix creswellii</i>, <i>Lepidosperma lyonsii</i>, and the undescribed <i>Lepidosperma</i> sp. | Tellus will develop and implement a Flora and Vegetation Management Plan for construction and operational activities. Induction material for construction and operational staff will include species avoidance awareness. | [15] Tellus, 2019, Flora and Vegetation Management Plan, V1, 19/06/2019, Ref: HS00-1760150200-22152. [18] Western Botanical, June 2021. Condition Assessment, <i>Lepidosprema spp.</i> , <i>Sandy Ridge. WB931</i> [20] Letter, DWER, 2019, Sandy Ridge Facility MS 1078 Flora and Vegetation Management Plan Approved, 01/07/2019, Ref: DWERA-002019. | Overall | During the construction and operational life of the proposal. | C | Tellus have prepared a Flora and Vegetation Management Plan (FVMP) [15] detailing how indirect impacts to <i>Calytrix creswellii</i> , <i>Lepidosperma lyonsii</i> , and the undescribed <i>Lepidosperma</i> sp. were to be avoided and managed. Potential indirect impacts addressed in the FVMMP are: <ul style="list-style-type: none"> Increased risk of fire; Altered hydrology; Increased dust; Uptake of saline water from dust suppression; and Introduction and spread of weeds from vehicles. The FVMP was approved by the CEO on 1 July 2019 [16]. The requirements of the FVMP were considered to be fully implemented during the reporting period. |
| 1078:M10.2 | Flora and Vegetation | Prior to the commencement of ground disturbing activities, the proponent shall prepare and submit a Targeted Flora Survey Plan for <i>Calytrix creswellii</i> , <i>Lepidosperma lyonsii</i> , and the undescribed <i>Lepidosperma</i> sp. to the CEO. | Develop and submit a Targeted Flora Survey Plan. | [17] DWER, 2019, Compliance Audit Report, 24 October 2019. | Overall | Prior to the commencement of ground disturbing activities. | CLD | This requirement was completed in the 2018/2019 reporting period. |
| 1078:M10.3 | Flora and Vegetation | The Targeted Flora Survey Plan required by condition 10-2 shall: <ol style="list-style-type: none"> detail the methodology for the targeted survey; quantify the number of <i>Calytrix creswellii</i>, <i>Lepidosperma lyonsii</i>, and the undescribed <i>Lepidosperma</i> sp. found within the development envelope; and meet the requirements of EPA Flora and Vegetation Guidance. | The Targeted Flora Survey Plan will detail the methodology for the targeted survey, quantify the number of <i>Calytrix creswellii</i> , <i>Lepidosperma lyonsii</i> , and the undescribed <i>Lepidosperma</i> sp. found within the development envelope and meet the requirements of EPA Flora and Vegetation Guidance. | [17] | Overall | As detailed in the Targeted Flora Survey Plan. | CLD | This requirement was completed in the 2018/2019 reporting period. |
| 1078:M10.4 | Flora and Vegetation | The proponent shall undertake the Targeted Flora Survey in accordance with the Targeted Flora Survey Plan as required by condition 10-2. | A competent person to undertake the Targeted Flora Survey in accordance with the Targeted Flora Survey Plan. | [17] | Overall | As detailed in the Targeted Flora Survey Plan. | CLD | This requirement was completed in the 2018/2019 reporting period. |

| Audit Code | Subject | Requirement | How | Evidence ¹ | Phase | Timeframe | Status | Further Information |
|--------------|----------------------|---|--|--|---------|--|--------|--|
| 1078:M10.5 | Flora and Vegetation | Prior to commencement of ground disturbing activities, and after completion of the Targeted Flora Survey , the proponent shall submit a Flora and Vegetation Management Plan to the CEO. | Develop and submit a Flora and Vegetation Management Plan. | [15], [16] | Overall | Prior to commencement of ground disturbing activities, and after completion of the Targeted Flora Survey. | CLD | Tellus prepared a Flora and Vegetation Management Plan (FVMP) (Tellus, 2019a), V1 and submitted it to the CEO on 19 June 2019 [15]. |
| 1078:M10.6 | Flora and Vegetation | The Flora and Vegetation Management Plan shall include detailed information on potential direct and indirect impacts to <i>Calytrix creswellii</i> , <i>Lepidosperma lyonsii</i> , and the undescribed <i>Lepidosperma</i> sp. and include the following: | The Flora and Vegetation Management Plan will include information on potential direct and indirect impacts to <i>Calytrix creswellii</i> , <i>Lepidosperma lyonsii</i> , and the undescribed <i>Lepidosperma</i> sp. | [15], [16] | Overall | Prior to commencement of ground disturbing activities, and after completion of the Targeted Flora Survey. | CLD | Section 2, Table 2-1 of the FVMP [15, pp.16-24] includes details concerning potential direct and indirect impacts to <i>Calytrix creswellii</i> , <i>Lepidosperma lyonsii</i> , and the undescribed <i>Lepidosperma</i> sp. |
| 1078:M10.6.1 | Flora and Vegetation | <ul style="list-style-type: none"> targeted flora survey results required by condition 10-4; | The Flora and Vegetation Management Plan will include the targeted flora results required by MS 1078, Condition 10-2. | [15], [16] | Overall | Prior to commencement of ground disturbing activities, and after completion of the Targeted Flora Survey. | CLD | Targeted flora survey results, required by Condition 10-4 were included in Appendix B of the Flora and Vegetation Management Plan [15]. |
| 1078:M10.6.2 | Flora and Vegetation | <ul style="list-style-type: none"> avoidance of direct impacts where practicable; and | The Flora and Vegetation Management Plan will include the requirement to avoid direct impacts, where practicable. | [15], [16] | Overall | Prior to commencement of ground disturbing activities, and after completion of the Targeted Flora Survey. | CLD | Section 2, Table 2-1 of the FVMP [15, pp.16-24] includes details concerning avoidance of direct impacts. |
| 1078:M10.6.3 | Flora and Vegetation | <ul style="list-style-type: none"> mitigation, monitoring and management measures for indirect impacts, including those for fire, dust suppression and water quality, and weeds. | The Flora and Vegetation Management Plan will include mitigation, monitoring and management measures for indirect impacts, including those for fire, dust suppression and water quality, and weeds. | [15], [16] | Overall | Prior to commencement of ground disturbing activities, and after completion of the Targeted Flora Survey. | CLD | Section 2, Table 2-1 of the FVMP [15, pp.16-24] includes details concerning mitigation, monitoring and management measures for indirect impacts, including those for fire, dust suppression and water quality, and weeds. |
| 1078:M10.7 | Flora and Vegetation | <ul style="list-style-type: none"> After receiving notice in writing from the CEO that the Flora and Vegetation Management Plan satisfies the requirements of condition 10-6, the proponent shall: | Once notice is received that the CEO is satisfied, commence implementation of the Flora and Vegetation Management Plan. | [15], [16] | Overall | During the life of the proposal | C | The CEO approved the FVMP (V1) on 1 July 2019 [16] stating that the CEO was “satisfied with the preparation of the Flora and Vegetation Management Plan (Version 1, 19 June 2019), and consider the requirements of conditions 10-5 to 10-6 of Ministerial Statement 1078 have been met”. The CEO also noted that “the findings of the peer review report that the plan is consistent with the requirements in condition 10-6, and if implemented, should achieve the objectives of condition 10-1 which is to avoid direct impacts to <i>Calytrix creswellii</i> , <i>Lepidosperma lyonsii</i> , and the undescribed <i>Lepidosperma</i> sp. where practicable, and manage indirect impacts to impacts to <i>Calytrix creswellii</i> , <i>Lepidosperma lyonsii</i> , and the undescribed <i>Lepidosperma</i> sp.” |
| 1078:M10.7.1 | Flora and Vegetation | <ul style="list-style-type: none"> implement the Flora and Vegetation Management Plan, or any subsequent revisions as approved by the CEO; and | Once notice is received that the CEO is satisfied, commence implementation of the Flora and Vegetation Management Plan. | [15], [16], [40] | Overall | Once written approval of the Flora and Vegetation Management Plan is received from the CEO. | IP | The LMMP was updated during the current reporting period and the revised LMMP (2022) is currently with EPA/s for assessment as part of EPA Assessment No. 2309 for the <i>Alignment of Gate Waste Acceptance Tonnage</i> . Refer to Table 3-5 of the CAR for details concerning implementation of the current approved FVMP. |
| 1078:M10.7.2 | Flora and Vegetation | <ul style="list-style-type: none"> continue to implement the Flora and Vegetation Management Plan, or any subsequent revisions as approved by the CEO, until the CEO has confirmed by notice in writing that the proponent has demonstrated the objectives specified in condition 10-1 have been met and therefore the implementation of the management plan is no longer required. | Once written approval of the Flora and Vegetation Management Plan is received from the CEO. | [18] Condition Assessment, <i>Lepidosperma</i> spp. Sandy Ridge. Report WB932, Western Botanical, June 2021. | Overall | Until the CEO has confirmed by notice in writing that the implementation of the management plan is no longer required. | C | The FVMP was implemented during the reporting period. Refer to Table 3-5 of the CAR for details. |

| Audit Code | Subject | Requirement | How | Evidence ¹ | Phase | Timeframe | Status | Further Information |
|--------------|----------------------|---|---|--|---------|---|--------|---|
| 1078:M10.8 | Flora and Vegetation | The proponent may review and revise the Flora and Vegetation Management Plan , or any subsequent revisions as approved by the CEO. | Once written approval of the Flora and Vegetation Management Plan is received from the CEO. | - | Overall | During the operational life of the proposal. | C | The FVMP was updated during the current reporting period and the revised FVMP (2022) is currently with EPA/s for assessment as part of EPA Assessment No. 2309 for the <i>Alignment of Gate Waste Acceptance Tonnage</i> . |
| 1078:M10.9 | Flora and Vegetation | The proponent shall review and revise the Flora and Vegetation Management Plan or any subsequently approved revisions, as and when directed by the CEO. | Once notice is received from the CEO that the Flora and Vegetation Management Plan must be reviewed and revised. | - | Overall | As and when directed by the CEO. | NR | No request by the CEO to revise the FVMP has been received by Tellus. |
| 1078:M11.1 | Terrestrial Fauna | The proponent shall manage the implementation of the proposal to meet the following environmental objective: <ul style="list-style-type: none"> ensure that impacts to terrestrial fauna are minimised. | Tellus will develop and implement a Construction Environmental Management Plan. Induction material for construction and operational staff will include terrestrial fauna avoidance awareness. | [19] Tellus, 2019c, Construction Fauna Management Plan, 13/06/2019, V1, Ref: HS00-1760150200-22117. [20] Letter, DWER, 2019, Sandy Ridge Facility MS 1078 Construction Fauna Management Plan Approved, 25/06/2019, Ref: DWERA-002019. | Overall | During the construction and operational life of the proposal. | C | A Construction Fauna Management Plan (CFMP) (V1) [19] was prepared which defines actions required to ensure impacts to terrestrial fauna are minimised. The CFMP was originally called the Construction Environmental Management Plan (as required by Condition 11.2 below); However, in agreement with DWER this was renamed the CFMP. Refer to Table 3-5 of the CAR for details concerning implementation of the CFMP. |
| 8:M11.2 | Terrestrial Fauna | Prior to the commencement of ground disturbing activities, the proponent shall prepare and submit a Construction Environmental Management Plan to the CEO, to demonstrate that the environmental objective in condition 11-1 will be met. | Develop and submit a Construction Environment Management Plan. | [19] / [20] | Overall | Prior to commencement of ground disturbing activities. | CLD | Clearing activities commenced on 7 July 2019, construction activities commenced formally on 15 September 2019. The CFMP was approved on 25 June 2019 [20] by the CEO who stated they were "satisfied with the preparation of the Construction Fauna Management Plan (Version 1, 13 June 2019), and consider the requirements of condition 11-2 to 11-3 of Ministerial Statement 1078 have been met". The CEO also noted that "from the findings of the peer review report that the plan is consistent with condition 11-3 and when implemented, should achieve the environmental objective in condition 11-1 which is to ensure that impacts to terrestrial fauna are minimised". |
| 1078:M11.3 | Terrestrial Fauna | The Construction Environmental Management Plan shall include: | - | - | - | - | - | - |
| 1078:M11.3.1 | Terrestrial Fauna | <ul style="list-style-type: none"> results from a pre-clearing survey; | The Construction Environmental Management Plan will include results from a pre-clearing survey. The Construction Environmental Management Plan will include the scope of pre-clearing surveys, including, but not limited to, any staging and timeframes for completion. | [19] | Overall | Prior to commencement of ground disturbing activities. | CLD | Results from pre-clearing fauna survey were included in the plan. |
| 1078:M11.3.2 | Terrestrial Fauna | <ul style="list-style-type: none"> avoidance, mitigation and management measures, including but not limited to recording sightings of conservation significant species including the Malleefowl and Rainbow Bee-eater; detailed clearing procedures, implementation of a boundary fence, control measures for feral fauna, and restricting vehicle speed limits; | The Construction Environmental Management Plan will be developed and implemented that meets the requirements of MS 1078, Condition M11-3.2. | [19] | Overall | Prior to commencement of ground disturbing activities. | CLD | Section 2, Table 2-1 of the CFMP [19, pp.15-21] includes avoidance, mitigation and management measures, including but not limited to recording sightings of conservation significant species including the Malleefowl; detailed clearing procedures, implementation of a boundary fence, control measures for feral fauna, and restricting vehicle speed limits. It is noted that the Rainbow Bee-eater (<i>Merops ornatus</i>) was recorded within the development envelope during surveys for the Public Environmental Review. This species was previously listed as Migratory under the BC Act and EPBC Act; however, this species has recently been de-listed from both the BC Act and the EPBC Act. |
| 1078:M11.3.3 | Terrestrial Fauna | <ul style="list-style-type: none"> an adaptive management framework, including trigger criteria, monitoring design and methodologies, and trigger management actions; | The Construction Environmental Management Plan will include an adaptive management framework, including trigger criteria, monitoring design and methodologies, and trigger management actions. | [19] | Overall | Prior to commencement of ground disturbing activities. | CLD | Section 2, Table 2-1 of the CFMP [19, pp.15-21] addresses trigger criteria, monitoring design and methodologies, and trigger management actions. Section 3 of the CFMP [16] address adaptive management. |

| Audit Code | Subject | Requirement | How | Evidence ¹ | Phase | Timeframe | Status | Further Information |
|--------------|-------------------|---|---|-----------------------|---------|--|--------|---|
| 1078:M11.3.4 | Terrestrial Fauna | <ul style="list-style-type: none"> incident reporting; | The Construction Environmental Management Plan will refer to the corporate incident reporting procedure for internal incident reporting requirements as well as external reporting requirements (e.g. to the OEPA). | [19] | Overall | During the operational life of the proposal. | CLD | <p>Section 2, Table 2-1 of the CFMP [19, pp.15-21] addresses incident reporting.</p> <p>Section 2, Table 2-4 of the CFMP [19, p.23] includes requirements for pollution incidents.</p> <p>Appendix B of the CFMP, Roles and Responsibilities [19] includes requirements for managing incidents.</p> <p>Appendix F of the CFMP, Vehicle Strike [19] includes requirements for incident management.</p> |
| 1078:M11.3.5 | Terrestrial Fauna | <ul style="list-style-type: none"> review periods; and | The Construction Environmental Management Plan will include review periods. | [19] | Overall | During the operational life of the proposal. | CLD | <p>Section 3.1 of the CFMP [19, p.24] addresses review periods.</p> <p>The CFMP was not updated during the reporting period.</p> |
| 1078:M11.3.6 | Terrestrial Fauna | <ul style="list-style-type: none"> implementation reporting and auditing. | The Construction Environmental Management Plan will include requirements for implementation and auditing. | [19] | Overall | During the operational life of the proposal. | CLD | <p>Section 2.3 of the CFMP [19, p.23] addresses reporting requirements including timing and responsibility.</p> |
| 1078:M11.4 | Terrestrial Fauna | After receiving notice in writing from the CEO that the Construction Environmental Management Plan satisfies the requirements of condition 11-1, the proponent shall: | Once notice is received that the CEO is satisfied, commence implementation of the Construction Environmental Management Plan. | [20] | Overall | Once written approval of the Construction Environmental Management Plan is received from the CEO. | C | <p>The CEO approved the CFMP (V1) on 25 June 2019 [20] stating that the CEO was "<i>satisfied with the preparation of the Construction Fauna Management Plan (Version 1, 13 June 2019), and consider the requirements of condition 11-2 to 11-3 of Ministerial Statement 1078 have been met</i>".</p> |
| 1078:M11.4.1 | Terrestrial Fauna | <ul style="list-style-type: none"> implement the Construction Environmental Management Plan, or any subsequent revisions as approved by the CEO; and | Once notice is received that the CEO is satisfied, commence implementation of the Construction Environmental Management Plan. | [19], [20], [41] | Overall | Once written approval of the Construction Environmental Management Plan is received from the CEO. | IP | <p>During the reporting period the CFMP has been updated and renamed the Fauna Management Plan (FMP). At the time of writing the FMP is with EPA/s for assessment as part of EPA Assessment No. 2309 for the <i>Alignment of Gate Waste Acceptance Tonnage</i>.</p> <p>The requirements of the current approved CFMP were implemented during the reporting period. Refer to Table 3-5 of the CAR for details concerning implementation of the CFMP.</p> |
| 1078:M11.4.2 | Terrestrial Fauna | <ul style="list-style-type: none"> continue to implement the Construction Environmental Management Plan, or any subsequent revisions as approved by the CEO, until the CEO has confirmed by notice in writing that the proponent has demonstrated the objective specified in condition 11-1 has been met and therefore the implementation of the management plan is no longer required. | Once written approval of the Construction Environmental Management Plan is received from the CEO. | [19], [20] | Overall | Until the CEO has confirmed by notice in writing that the implementation of the management plan is no longer required. | C | <p>The requirements of the current approved CFMP were implemented during the reporting period. Refer to Table 3-5 of the CAR for details concerning implementation.</p> |
| 1078:M11.5 | Terrestrial Fauna | The proponent may review and revise the Construction Environmental Management Plan , or any subsequent revisions as approved by the CEO. | Once written approval of the Construction Environmental Management Plan is received from the CEO. | [19], [20] | Overall | During the operational life of the proposal. | C | <p>During the reporting period the CFMP has been updated and renamed the Fauna Management Plan (FMP). At the time of writing the FMP is with EPA/s for assessment as part of EPA Assessment No. 2309 for the <i>Alignment of Gate Waste Acceptance Tonnage</i>.</p> |
| 1078:M11.6 | Terrestrial Fauna | The proponent shall review and revise the Construction Environmental Management Plan , or any subsequently approved revisions, as and when directed by the CEO. | Once notice is received from the CEO that the Construction Environmental Management Plan must be reviewed and revised. | [19], [20] | Overall | As and when directed by the CEO. | NR | <p>This requirement was not triggered during the reporting period.</p> |

| Audit Code | Subject | Requirement | How | Evidence ¹ | Phase | Timeframe | Status | Further Information |
|--------------|--|---|---|---|------------------|--|--------|--|
| 1078:M12.1 | Waste Facility Decommissioning and Closure | Within six (6) months of the date of this Statement or as otherwise agreed in writing by the CEO, and after consulting with, and obtaining the advice of the Radiological Council and the Department of Planning, Lands, and Heritage, the proponent shall update and submit the Waste Facility Decommissioning and Closure Plan (Plan) to the CEO demonstrating how the site will be rehabilitated, remediated and decommissioned to ensure it is physically safe to members of the public and non-human biota, and is geotechnically and geomorphically stable, and chemically and radiologically non-polluting, in the long term. | Develop and submit a Waste Facility Decommissioning and Closure Plan in consultation with the Radiological Council and the Department of Planning, Lands, and Heritage. | <p>[21] Letter, Tellus, 2018, Sandy Ridge Facility Statement Number 1078 Condition 12-1 – request for extension, 07/12/2018, Ref: HS00-1760150200-20468.</p> <p>[22] Letter, DWER, 2018, Statement 1078, Sandy Ridge Facility, Request for Extension on Condition 12-1, 17/12/2018, Ref: DWERA-001158.</p> <p>[23] Letter, DWER, 2019, Sandy Ridge Facility, Ministerial Statement 1078, Waste Facility Decommissioning Closure Plan, Amendments Required, Ref: DWERDG 676/19, 29 November 2019.</p> <p>[24] Tellus, 2020, Sandy Ridge Facility Waste Facility Decommissioning Closure Plan, Ref: HS00-1760150200-45, V3, 6 February 2020.</p> <p>[25] Letter, DWER, 2020, Sandy Ridge Facility, Ministerial Statement 1078, Waste Facility Decommissioning Closure Plan, Approved, Ref: DWERT4733, 27 February 2020.</p> | Pre-construction | Within six (6) months of the date of MS 1078 (i.e. 27 December 2018) or as otherwise agreed in writing by the CEO. | CLD | <p>Tellus requested an extension to the due date for the Sandy Ridge Waste Facility Decommissioning Closure Plan (WFDCP) from DWER on 7 December 2018 [21]. DWER wrote to Tellus on 17 December 2018 [22] granting an extension to the submission of the WFDCP until prior to commencement of waste receipt.</p> <p>Tellus first submitted the WFDCP to DWER in October 2019. Following several iterations, a revised WFDCP (V3) [24] was submitted to DWER on 6 February 2020. DWER approved the WFDCP on 27 February 2020 [25] noting that “...the requirements of Condition 12 (Waste Facility Decommissioning and Closure) of Ministerial Statement 1078 have been met”. It is noted that Version 3 (V3) is the first approved version of the WFDCP.</p> |
| 1078:M12.2 | Waste Facility Decommissioning and Closure | The Plan shall: | - | - | - | - | - | - |
| 1078:M12.2.1 | Waste Facility Decommissioning and Closure | <ul style="list-style-type: none"> specify the environmental objective in condition 12-1; | The Waste Facility Decommissioning and Closure Plan will include details concerning how the site will be rehabilitated, remediated and decommissioned to ensure it is physically safe to members of the public and non-human biota, and is geotechnically and geomorphically stable, and chemically and radiologically non-polluting, in the long term. | [24], [25] | Pre-construction | During the life of the proposal. | CLD | Environmental objectives were included in Sections 5, 8 and 9 of the WFDCP [24]. |
| 1078:M12.2.2 | Waste Facility Decommissioning and Closure | <ul style="list-style-type: none"> detail outcomes based upon completion criteria that would need to be quantitative or semi-quantitative; | Following consultation with the Radiological Council and the Department of Planning, Lands, and Heritage the Waste Facility Decommissioning and Closure Plan will detail outcomes based upon completion criteria that would need to be quantitative or semi-quantitative. | [24], [25] | Pre-construction | During the life of the proposal. | CLD | Completion criteria was included in Section 9, Table 9-2 and Section 9.3 of the WFDCP [24]. |
| 1078:M12.2.3 | Waste Facility Decommissioning and Closure | <ul style="list-style-type: none"> specify rehabilitation, remediation and decommissioning actions that would result in the site meeting the completion criteria of condition 12-2(2) above; | Following consultation with the Radiological Council and the Department of Planning, Lands, and Heritage the Waste Facility Decommissioning and Closure Plan will specify rehabilitation, remediation and decommissioning actions that will result in the site meeting the completion criteria. | [24], [25] | Pre-construction | During the life of the proposal. | CLD | Rehabilitation, remediation and decommissioning actions were included in Section 5.2, 8.2 and 9 and Table 8-1 of the WFDCP [24]. |

| Audit Code | Subject | Requirement | How | Evidence ¹ | Phase | Timeframe | Status | Further Information |
|----------------|--|---|--|---|------------------|--|--------|--|
| 1078:M12.2.4 | Waste Facility Decommissioning and Closure | <ul style="list-style-type: none"> specify modelling or projection techniques that are being developed and used to predict the site would meet the completion criteria of condition 12-2(2) above in the long term; | Following consultation with the Radiological Council and the Department of Planning, Lands, and Heritage the Waste Facility Decommissioning and Closure Plan will specify the modelling or projection techniques to predict the site will meet the completion criteria. | [24], [25] | Pre-construction | During the life of the proposal. | CLD | Modelling/projection techniques used to predict the site would meet the completion criteria of condition 12-2(2) was included in Sections 8 and 9 of the WFDCP [24]. |
| 1078:M12.2.5 | Waste Facility Decommissioning and Closure | <ul style="list-style-type: none"> specify monitoring to measure the effectiveness of remediation, rehabilitation and decommissioning actions against completion criteria, including but not limited to, parameters to be measured, baseline data, monitoring locations, and frequency and timing of monitoring; | Following consultation with the Radiological Council and the Department of Planning, Lands, and Heritage the Waste Facility Decommissioning and Closure Plan will specify the monitoring required to measure the effectiveness of remediation, rehabilitation and decommissioning actions against completion criteria. | [24], [25] | Pre-construction | During the life of the proposal. | CLD | Monitoring requirements to measure the effectiveness of remediation, rehabilitation and decommissioning actions against completion criteria was included in Section 9 of the WFDCP [24]. |
| 1078:M12.2.6 | Waste Facility Decommissioning and Closure | <ul style="list-style-type: none"> provide the format and timing to demonstrate the objective in condition 12-1 has been met for the reporting period in the Compliance Assessment Report required by condition 4-6 including, but not limited to: | Following consultation with the Radiological Council and the Department of Planning, Lands, and Heritage the Waste Facility Decommissioning and Closure Plan will report on the effectiveness of rehabilitation, remediation and decommissioning actions against completion criteria for the 12-month period from the date of issue of MS 1078, and then annually from the date of submission of the first Compliance Assessment Report. | [24], [25] | Pre-construction | During the life of the proposal. | CLD | Sections 8 and 9 of the WFDCP included the format and timing to demonstrate the objective in condition 12-1 has been met for the reporting period in the Compliance Assessment Report. Section 8.2 (24, p.36) of the WFDCP notes that “Cells will be progressively rehabilitated throughout operations. It is anticipated that nominally one Cell will be completed and closed each year during the operations phase (25 years). It is envisaged that each Cell will be monitored for 10 years for subsidence, topsoil replaced and vegetated, and that vegetation monitored for 10 years”. Mining of the first waste cell in the air dome commenced on 27 April 2020 and was completed in October 2020. |
| 1078:M12.2.6.A | Waste Facility Decommissioning and Closure | <ul style="list-style-type: none"> verification of the implementation of rehabilitation, remediation and decommissioning actions; and | | | | | | |
| 1078:M12.2.6.B | Waste Facility Decommissioning and Closure | <ul style="list-style-type: none"> reporting on the effectiveness of rehabilitation, remediation and decommissioning actions against completion criteria. | | | | | | |
| 1078:M12.3 | Waste Facility Decommissioning and Closure | After receiving notice in writing from the CEO that the Plan satisfies the requirements of conditions 12-1 and 12-2, the proponent shall implement the Plan. | Once notice is received that the CEO is satisfied, commence implementation of the Waste Facility Decommissioning and Closure Plan. | [24] | Overall | Once written approval of the Waste Facility Decommissioning and Closure Plan is received from the CEO. | IP | The first scheduled activity will occur in Phase I and is the progressive closure of waste cells including tasks such as cell cap design verification, plant species investigation followed by backfilling and capping of each cell. Given the first pit was still in use during this reporting period implementation of the WFDCP [24] is not expected to occur until late 2023. During the reporting period the WFDCP has been updated (Rev 4, 18 August 2022). At the time of writing it is with EPA/s for assessment as part of EPA Assessment No. 2309 for the <i>Alignment of Gate Waste Acceptance Tonnage</i> . |
| 1078:M12.4 | Waste Facility Decommissioning and Closure | The proponent shall review and revise the Plan required by conditions 12-1 and 12-2 at intervals not exceeding three years, or as otherwise agreed by the CEO, and submit the Plan to the CEO. The revision of the Plan shall include, in addition to the requirements of condition 12-2: | At intervals not exceeding three years review and revise, where necessary, the Waste Facility Decommissioning and Closure Plan. Submit the Waste Facility Decommissioning and Closure Plan to the CEO. | [42] Waste Facility Decommissioning Closure Plan, Rev 4. 18 August 2022 | Operations | At intervals not exceeding three years, or as otherwise agreed by the CEO. | IP | During the reporting period the WFDCP has been updated (Rev 4, 18 August 2022) [42]. At the time of writing it is with EPA/s for assessment as part of EPA Assessment No. 2309 for the <i>Alignment of Gate Waste Acceptance Tonnage</i> . |
| 1078:M12.4.1 | Waste Facility Decommissioning and Closure | <ul style="list-style-type: none"> an estimate of the liability represented by the site should it require closure when the revised Plan is implemented; | Revised versions of the Waste Facility Decommissioning and Closure Plan to include an estimate of the liability represented by the site should it require closure when the revised Plan is implemented. | [42] [44] Institutional Control Period (ICP) Works Programme and Budget 2023 | Operations | At intervals not exceeding three years, or as otherwise agreed by the CEO. | C | The WFDCP does not include an estimate itself but does define the processes for establishing and managing financial provisions for closure. An Institutional Control Period (ICP) Works Programme and Budget (Works Programme) [44] as defined in the Financial Assurance Deed has been established and this included costings. |

| Audit Code | Subject | Requirement | How | Evidence ¹ | Phase | Timeframe | Status | Further Information |
|--------------|--|---|---|--|-----------------|--|--------|--|
| 1078:M12.4.2 | Waste Facility Decommissioning and Closure | <ul style="list-style-type: none"> actions that would need to be undertaken should the site require closure when the revised Plan is implemented; and | Revised versions of the Waste Facility Decommissioning and Closure Plan to include actions that would need to be undertaken should the site require closure when the revised Plan is implemented. | [42], [44] | Operations | At intervals not exceeding three years, or as otherwise agreed by the CEO. | C | The draft updated WFDCP includes actions that would need to be undertaken should the site require closure. |
| 1078:M12.4.3 | Waste Facility Decommissioning and Closure | <ul style="list-style-type: none"> the matters set out in condition 12-4(1) and condition 12-4(2) must be reviewed by an independent person with suitable expertise. | Tellus to engage an independent and competent person to review the revised Waste Facility Decommissioning and Closure Plan. | [42], [44] | Operations | At intervals not exceeding three years, or as otherwise agreed by the CEO. | C | The updated WFDCP was revised and reviewed by GHD, recognised experts in closure planning. |
| 1078:M12.5 | Waste Facility Decommissioning and Closure | The proponent shall implement the latest revision of the Plan, which the CEO has confirmed by notice in writing, satisfies the requirements of condition 12-4. | Once notice is received that the CEO is satisfied, commence implementation of the latest version of the Waste Facility Decommissioning and Closure Plan. | [24] [45] | Operations | Once written approval of the revised Waste Facility Decommissioning and Closure Plan is received from the CEO. | C | An amendment to the cell cap design was approved on 22 August 2022 [45] as part of the Proposal to increase the gate capacity (Assessment number 2309 – Sandy Ridge Facility – Alignment of Gate Waste Acceptance Tonnage) [46]. The proposed amendment includes a reduction in the thickness of the capillary break layer from 4 metres (m) to 1 m (a reduction of 3 m). |
| 1078:M12.6 | Waste Facility Decommissioning and Closure | The proponent shall not commence Phase I of the Institutional Control Period until a Plan that satisfies the requirements of condition 12-4 has been approved by the CEO. | Only once notice is received that the CEO is satisfied, commence implementation of the latest version of the Waste Facility Decommissioning and Closure Plan. | [24] | Operations | Only when the CEO is satisfied and has approved the revised Plan against the requirements of MS 1078, Condition 12-4. | NR | Cell 1 is still in operation therefore this requirement was not triggered during the reporting period. |
| 1078:M12.7 | Waste Facility Decommissioning and Closure | After receiving notice in writing from the CEO that the final Plan satisfies the requirements of conditions 12-4, the proponent shall implement the final Plan. | Implement the final Waste Facility Decommissioning and Closure Plan only once notice is received that the CEO is satisfied. | [24] | Decommissioning | Only when the CEO is satisfied and has approved the revised Plan against the requirements of MS 1078, Condition 12-4. | NR | Cell 1 is still in operation therefore this requirement was not triggered during the reporting period. |
| 1078:M12.8 | Waste Facility Decommissioning and Closure | The proponent shall not stop implementing the final Plan until it has demonstrated the completion criteria of the final Plan will be met in the long term. | Implement the Final Waste Facility Decommissioning and Closure Plan until the CEO has confirmed by notice in writing that completion criteria of the final Plan will be met in the long term. | [24] | Decommissioning | Until it is demonstrated that the completion criteria of the Final Waste Facility Decommissioning and Closure Plan will be met in the long term. | NR | Cell 1 is still in operation therefore this requirement was not triggered during the reporting period. |
| 1078:M13.1 | Financial Assurance Requirement | Pursuant to Part VA of the EP Act, the proponent must provide to the CEO financial assurance in the form of: | Obtain Insurance Policies and Bank Guarantee and submit to CEO. | [26] Transmittal – Tellus to DWER, [27] Chubb Premises Pollution Liability III Policy Wording. Policy No. 02CL036460. [28] Contractors Pollution Liability III Insurance Policy Claims – Made Coverage. Policy No. 02CL036460. | Operations | Before accepting any waste at the Sandy Ridge Facility. | C | The following two insurance policies were provided to the CEO on 06 June 2023 [26]: <ul style="list-style-type: none"> Chubb Premises Pollution Liability III Policy Wording. Policy No. 02CL036460 [27]. Contractors Pollution Liability III Insurance Policy Claims – Made Coverage. Policy No. 02CL036460 [28]. |
| 1078:M13.1.1 | Financial Assurance Requirement | <ul style="list-style-type: none"> a current insurance policy or policies (Insurance Policies); and | | | | | | |
| 1078:M13.1.2 | Financial Assurance Requirement | <ul style="list-style-type: none"> a bank guarantee (Bank Guarantee), before accepting any waste at the site (collectively, Financial Assurance). | | [31] Letter, DWER, 2020, Acceptance of Bank Guarantee (G660077) – Sandy Ridge Facility – Ministerial Statement 1078 – Condition 13, Ref: DWERA-001158, 12 June 2020. | | | NR | Condition 13-1 (2) of MS1078 is no longer applicable because a Financial Assurance Deed relating to the Sandy Ridge Project has been established between Tellus Holdings Ltd and the State of Western Australia acting through the Minister for Lands and the Minister for the Environment (see M13.11 below). |
| 1078:M13.2 | Financial Assurance Requirement | The Financial Assurance may be called upon or used in accordance with section 86E of the EP Act if the proponent fails to comply with the EP Act, or these conditions. | Comply with all requirements of the EP Act and MS 1078. | - | Overall | If the Sandy Ridge Facility fails to comply with the EP Act or MS 1078. | NR | This requirement was not triggered during the reporting period. Refer to Condition 13-1 for further details. |

| Audit Code | Subject | Requirement | How | Evidence ¹ | Phase | Timeframe | Status | Further Information |
|----------------|---------------------------------|---|---|---|-----------------|---|--------|--|
| 1078:M13.3 | Financial Assurance Requirement | The Financial Assurance or any part of it shall be discharged by the CEO and the Minister when the CEO has given the proponent written notice pursuant to section 86F(1) of the EP Act. | Only once written notice is received from the CEO that the CEO and Minister have discharged the Financial Assurance or any part of it. | - | Decommissioning | Only when the CEO is satisfied and has approved the revised Plan against the requirements of MS 1078, Condition 12-4. | NR | This requirement was not triggered during the reporting period. |
| 1078:M13.4 | Insurance Policies | The Insurance Policies must: | - | - | - | - | - | - |
| 1078:M13.4.1 | Insurance Policies | <ul style="list-style-type: none"> be with an insurer authorised by the Australian Prudential Regulation Authority to conduct insurance business in Australia; | Obtain Insurance Policies from insurer authorised by the Australian Prudential Regulation Authority to conduct insurance business in Australia | [27], [28] Australian Prudential Regulation Authority, website, www.apra.gov.au | Overall | During the life of the proposal. | C | The Insurance Policies are issued by or on behalf of Chubb Insurance Australia Limited. Chubb are listed on the APRA website as authorised to conduct new or renewal insurance business in Australia. |
| 1078:M13.4.2 | Insurance Policies | <ul style="list-style-type: none"> be in the name, or in favour of the Minister and the CEO, or list the Minister and CEO as 'insured parties'; | Obtain Insurance Policies in the name, or in favour of the Minister and the CEO, or list the Minister and CEO as 'insured parties'. | [27], [28] | Overall | During the life of the proposal. | C | The Insurance policies [27], [28] includes the Minister and the CEO as insured parties. |
| 1078:M13.4.3 | Insurance Policies | <ul style="list-style-type: none"> be in a form acceptable to the CEO, and provide for payment of any costs incurred by the Minister or the CEO: | Obtain Insurance Policies that are in a form acceptable to the CEO and provide for payment of any costs incurred by the Minister or the CEO. | [27], [28] | Overall | During the life of the proposal. | C | The Insurance policies [27], [28] includes the Minister and the CEO as insured parties. |
| 1078:M13.4.3.A | Insurance Policies | <ul style="list-style-type: none"> pursuant to Part VA of the EP Act; or | | | | | | |
| 1078:M13.4.3.B | Insurance Policies | <ul style="list-style-type: none"> as a consequence of a breach of these conditions by the proponent; and | | | | | | |
| 1078:M13.4.4 | Insurance Policies | <ul style="list-style-type: none"> provide policy limits of not less than AUD\$50 million in respect of any one event, and AUD\$50 million in the aggregate for any three-year period of cover. | Obtain Insurance Policies that provide policy limits of not less than AUD\$50 million in respect of any one event, and AUD\$50 million in the aggregate for any three-year period of cover. | [27], [28] | Overall | Over any three-year period of cover. | C | The insurance policies provide limits of not less than AUD\$50 million in respect of any one event, and AUD\$50 million in the aggregate for a three-year period of cover, from 30 April 2023 to 30 April 2026. |
| 1078:M13.5 | Insurance Policies | The proponent must maintain the Insurance Policies and not cancel them, allow them to lapse, or do or allow anything to be done which will adversely affect the Insurance Policies. | Obtain and maintain Insurance Policies. | [27], [28] | Overall | During the life of the proposal. | C | The initial environmental liability insurance policies expired on 19 December 2022 and this was extended to 30 April 2023 under Willis Limited Global Markets International Contract Endorsement reference no. B080110056G19 (XL Insurance Company issued on behalf of SCOR Syndicate 2015 at Lloyd's) [29]. The above Chubb policies are effective from 30 April 2023. Refer to Condition 13-1 for further details. |
| 1078:M13.6 | Insurance Policies | The proponent must not vary the Insurance Policies without the prior written approval of the CEO. | Tellus will obtain written approval from the CEO if it intends to vary the Insurance Policies. | [27], [28] | Overall | During the life of the proposal. | C | Various emails were sighted to confirm that Tellus engaged with DWER regarding the new insurance policies issued by Chubb. Correspondence confirms that initial concerns around one clause in the contract were satisfied. |
| 1078:M13.7 | Insurance Policies | Each 1 July, and each time the Insurance Policies are renewed, the proponent must provide a certificate of currency or alternative evidence in a form acceptable to the CEO of the existence of the Insurance Policies. | Provide a certificate of currency or alternate evidence to the CEO when the Insurance Policies are renewed. | [27], [28], [26] | Overall | On or by 1 July each year or each time the Insurance Policies are renewed. | C | A certificate of currency for the environmental liability insurance policies was provided to DWER on 10 June 2023 [26]. |
| 1078:M13.8 | Insurance Policies | Within 15 months of accepting waste at the site, and thereafter every 3 years or such other period agreed with the CEO, or upon request by the CEO in the event of a change of circumstance at the site material to any matter relating to the EP Act, the proponent must review and provide a report to the CEO in relation to the adequacy of the Insurance Policies. | Review the adequacy of the Insurance Policies. Prepare and submit a report to the CEO concerning the adequacy of the Insurance Policies. | [30] | Overall | Within 15 months of accepting waste at the site, and thereafter every three years or such other period agreed with the CEO, or upon request by the CEO. | C | First waste was accepted at the Facility on 6 July 2020 therefore the first scheduled review and report to the CEO in relation to the adequacy of the Insurance Policies was due on 6 October 2021., The report was submitted to the CEO on 11/11/2021. |

| Audit Code | Subject | Requirement | How | Evidence ¹ | Phase | Timeframe | Status | Further Information |
|--------------|----------------------------------|--|--|-----------------------|---------|----------------------------------|--------|--|
| 1078:M13.9 | Bank Guarantee | The Bank Guarantee shall: | - | - | - | - | - | - |
| 1078:M13.9.1 | Bank Guarantee | <ul style="list-style-type: none"> be in the form of an unconditional and irrevocable bank guarantee in favour of the Minister and the CEO from a guarantor acceptable to the CEO; | Confirm in writing acceptable guarantors from the CEO prior to obtaining a Bank Guarantee. Obtain a Bank Guarantee from a guarantor acceptable to the CEO. | [31] | Overall | During the life of the proposal. | C | Tellus provided a Bank Guarantee for the amount stated in Condition 13-9(2) to the CEO of DWER on 9 June 2020. In a letter to Tellus dated 12 June 2020 the Chief Executive Officer of DWER confirmed the Bank Guarantee was for the amount stated in Condition 13-9(2) and advised that the Bank Guarantee met the requirements of Condition 13.9 of MS 1078 [31]. |
| 1078:M13.9.2 | Bank Guarantee | <ul style="list-style-type: none"> be for AUD\$6.12 million; and | Obtain a Bank Guarantee from a guarantor acceptable to the CEO to the value of AUD\$6.12 million. | [31] | Overall | During the life of the proposal. | C | |
| 1078:M13.9.3 | Bank Guarantee | <ul style="list-style-type: none"> be substituted every five years after the provision of the first Bank Guarantee with the fixed initial amount of each successive guarantee being indexed to inflation (being the Consumer Price Index, Perth). | Obtain a Bank Guarantee from a guarantor acceptable to the CEO that is indexed to inflation (being the Consumer Price Index, Perth). | - | Overall | Every five years. | NR | |
| 1078:M13.10 | Bank Guarantee | The proponent may by agreement with the CEO terminate its liability under the Bank Guarantee by paying to the Minister or the CEO the amount of the Bank Guarantee remaining unpaid, and the CEO will hold that amount as security for any liability of the proponent arising pursuant to the EP Act or these conditions in an interest bearing account nominated by the CEO, with interest accruing for the benefit of the Minister and / or the CEO. | Obtain written agreement from the CEO that Tellus intends to terminate its liability under the Bank Guarantee. Terminate the Bank Guarantee in accordance with the terms and conditions of the agreement. | - | Overall | During the life of the proposal. | NR | This requirement was not triggered during the reporting period. |
| 1078:M13.11 | Financial Assurance Requirements | The proponent is not required to comply with condition 13-1(2) of Ministerial Statement 1078 if the proponent enters into a deed with the State that allows the State to recover from a Trust any costs referred to in paragraphs (a) to (d) of section 86E(1) of the <i>Environmental Protection Act 1986</i> . | Tellus to enter into a deed with the state. | | Overall | During the life of the proposal. | C | A Financial Assurance Deed relating to the Sandy Ridge Project has been established between Tellus Holdings Ltd and the State of Western Australia acting through the Minister for Lands and the Minister for the Environment. An Institutional Control Period (ICP) Works Programme and Budget (Works Programme) as defined in the Financial Assurance Deed has been established and this included costings. The costings from the 2020 Works Programme were adjusted in 2023 to account for inflation. |